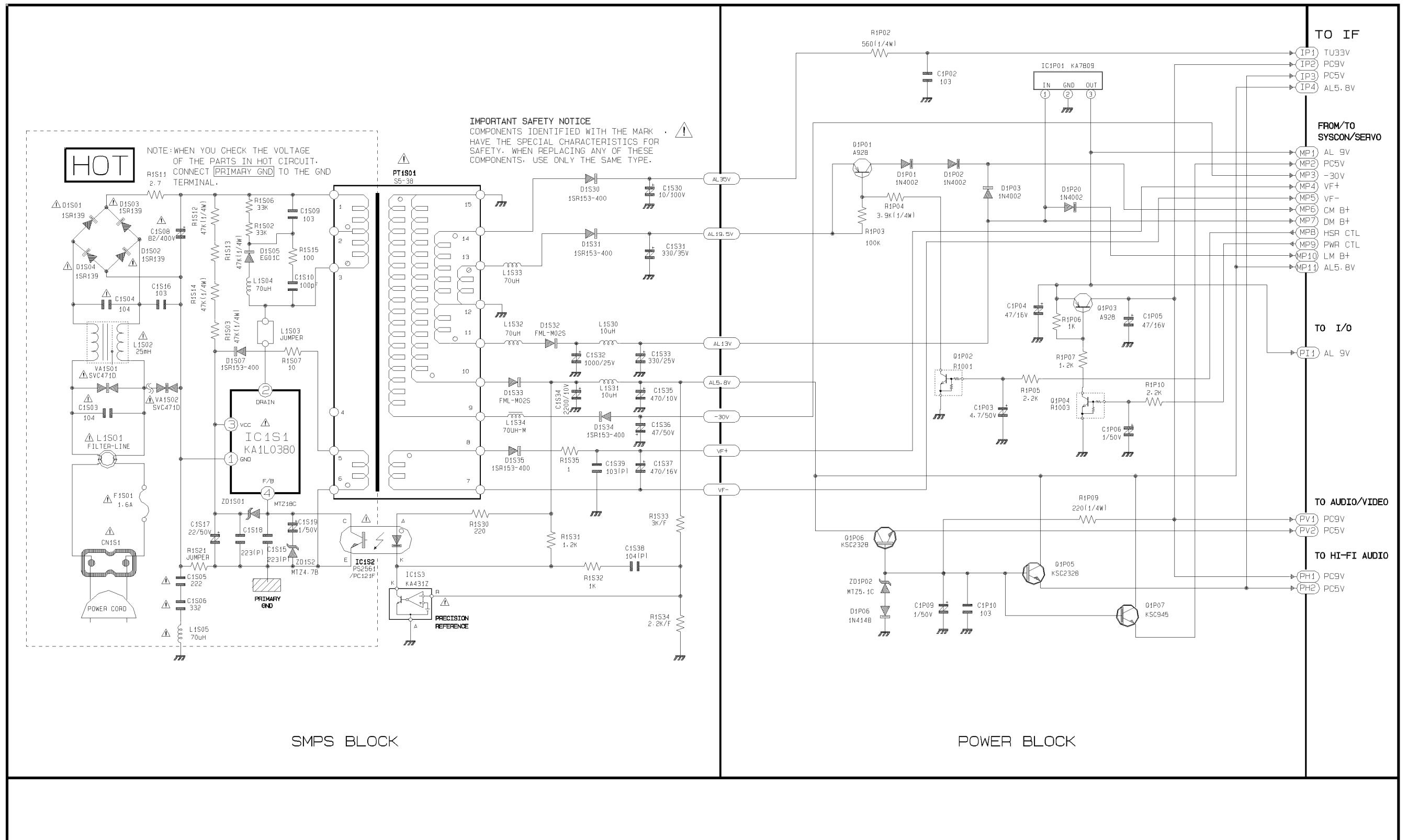
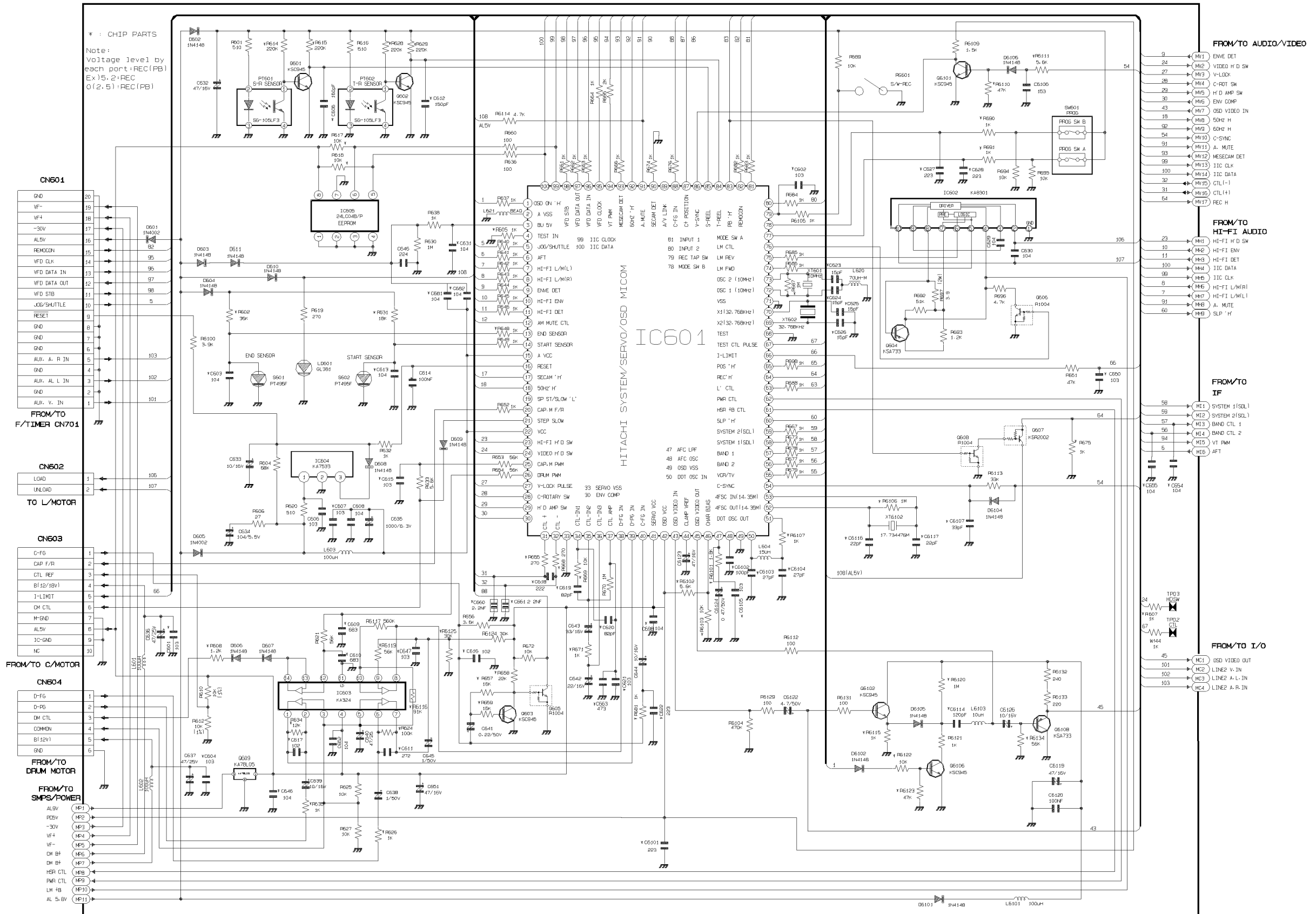


11-1 S.M.P .S/POWER

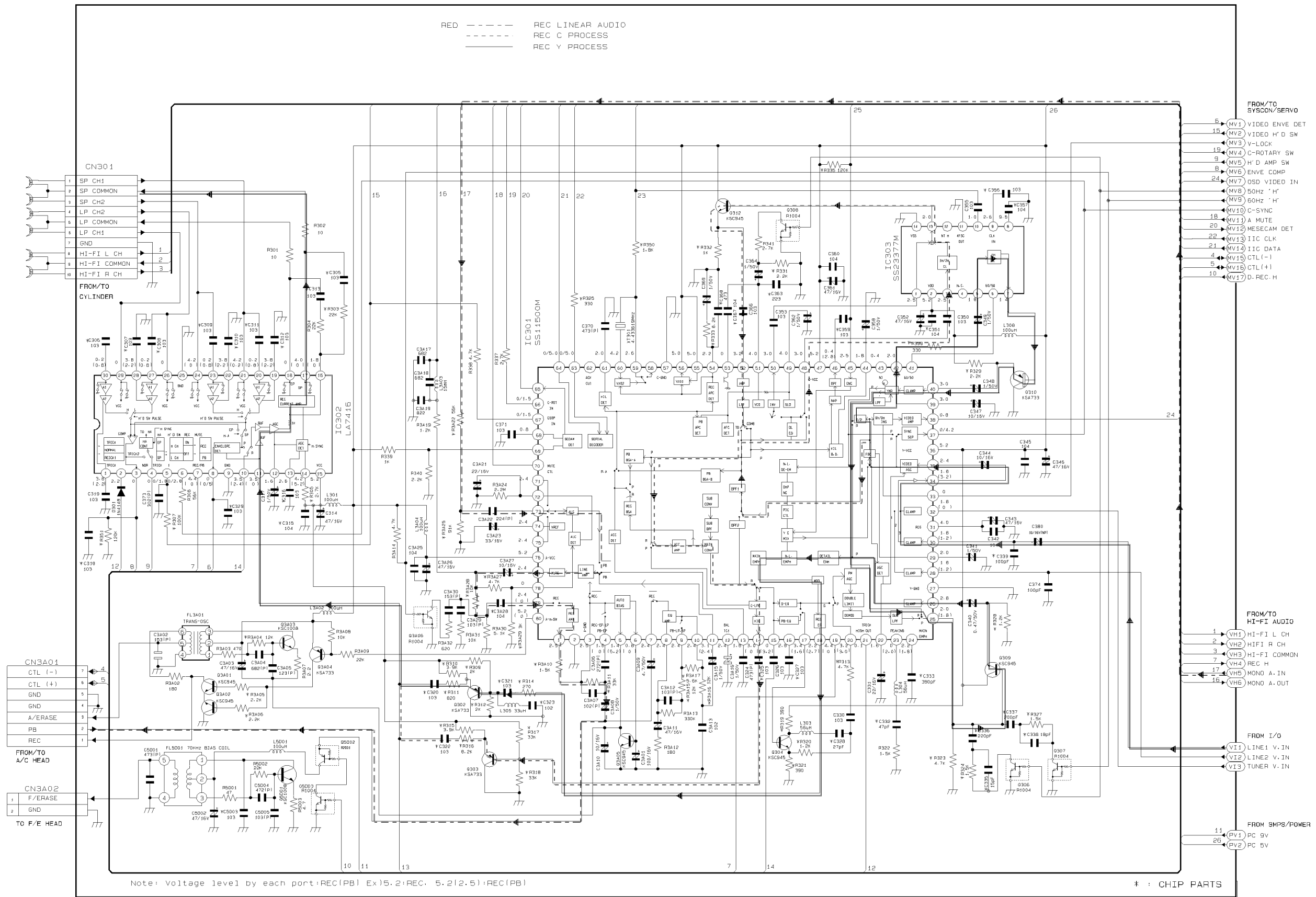


11-2 System Contr ol/Ser vo

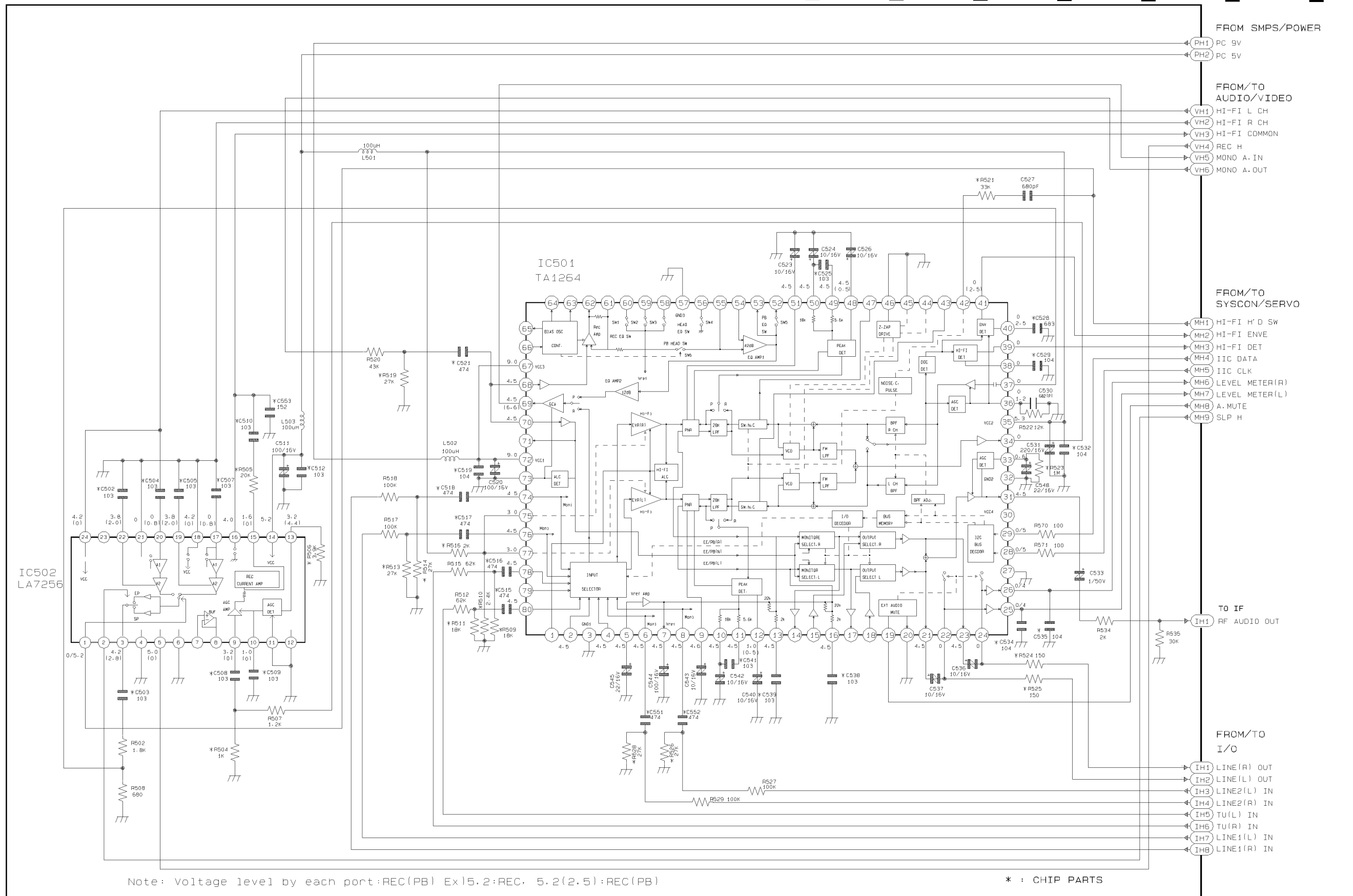
SV-A140B SYSCON 97.06.24



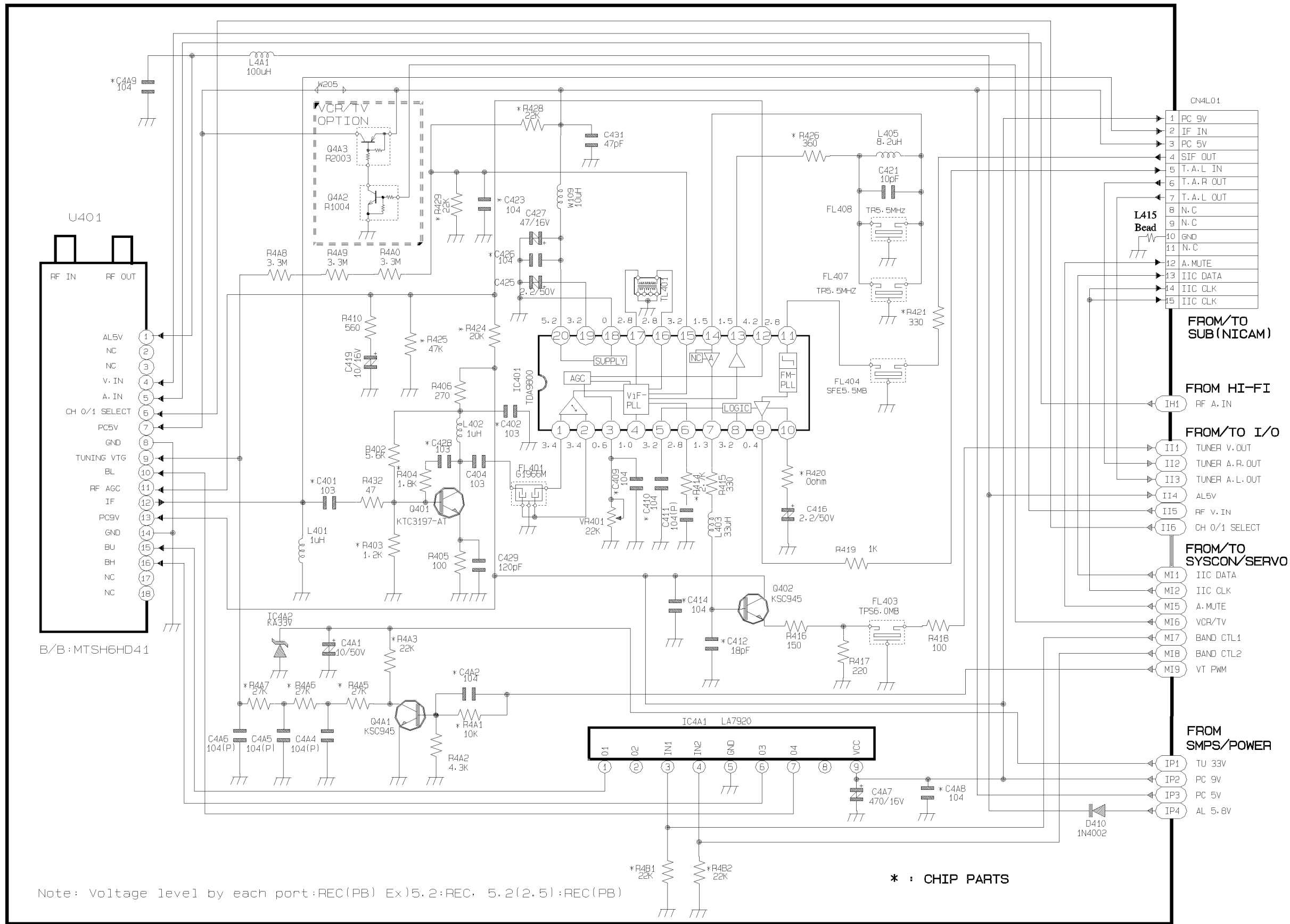
11-3 Audio/V ideo



11-4 Hi-Fi Audio

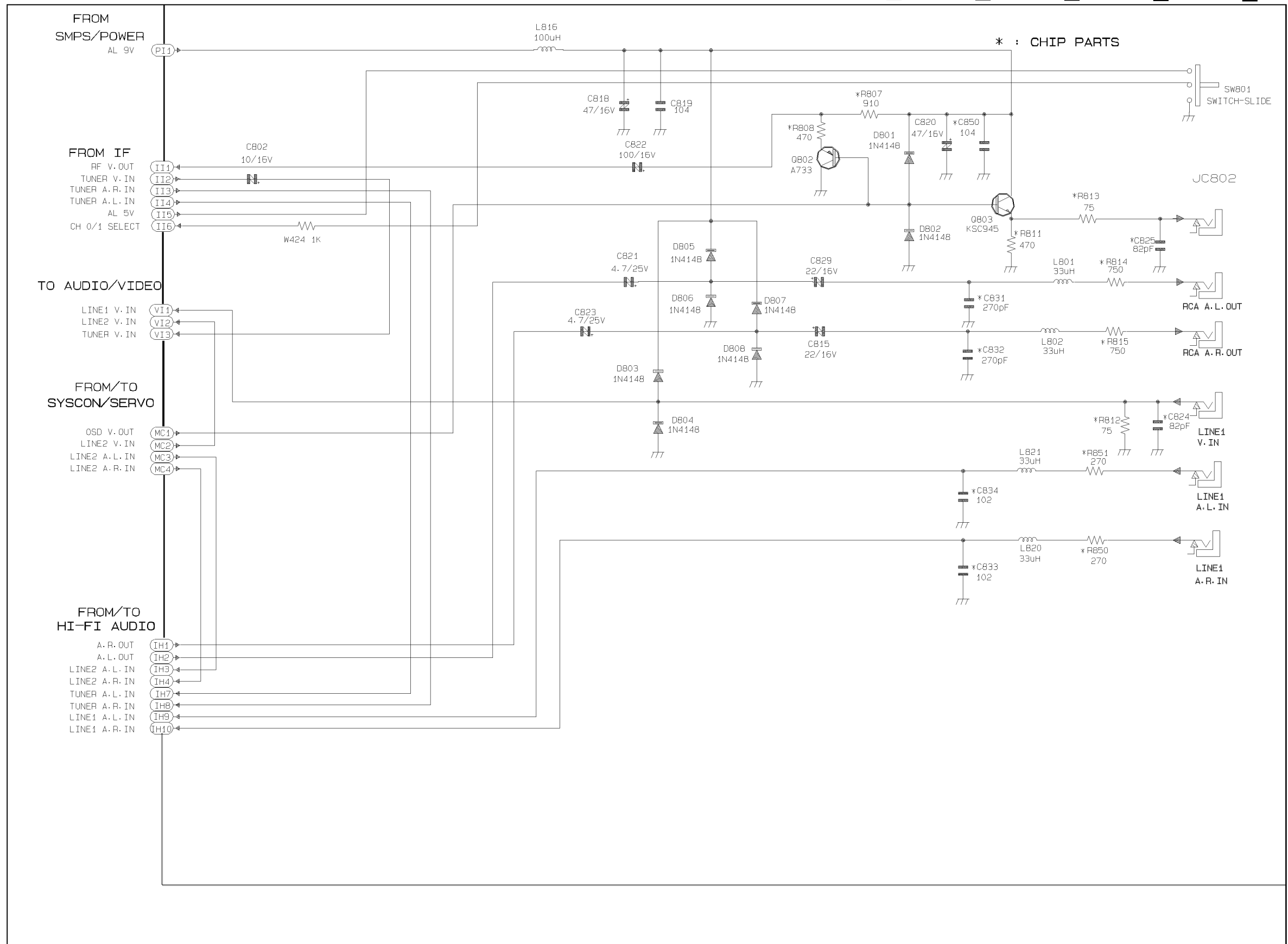


11-5 IF

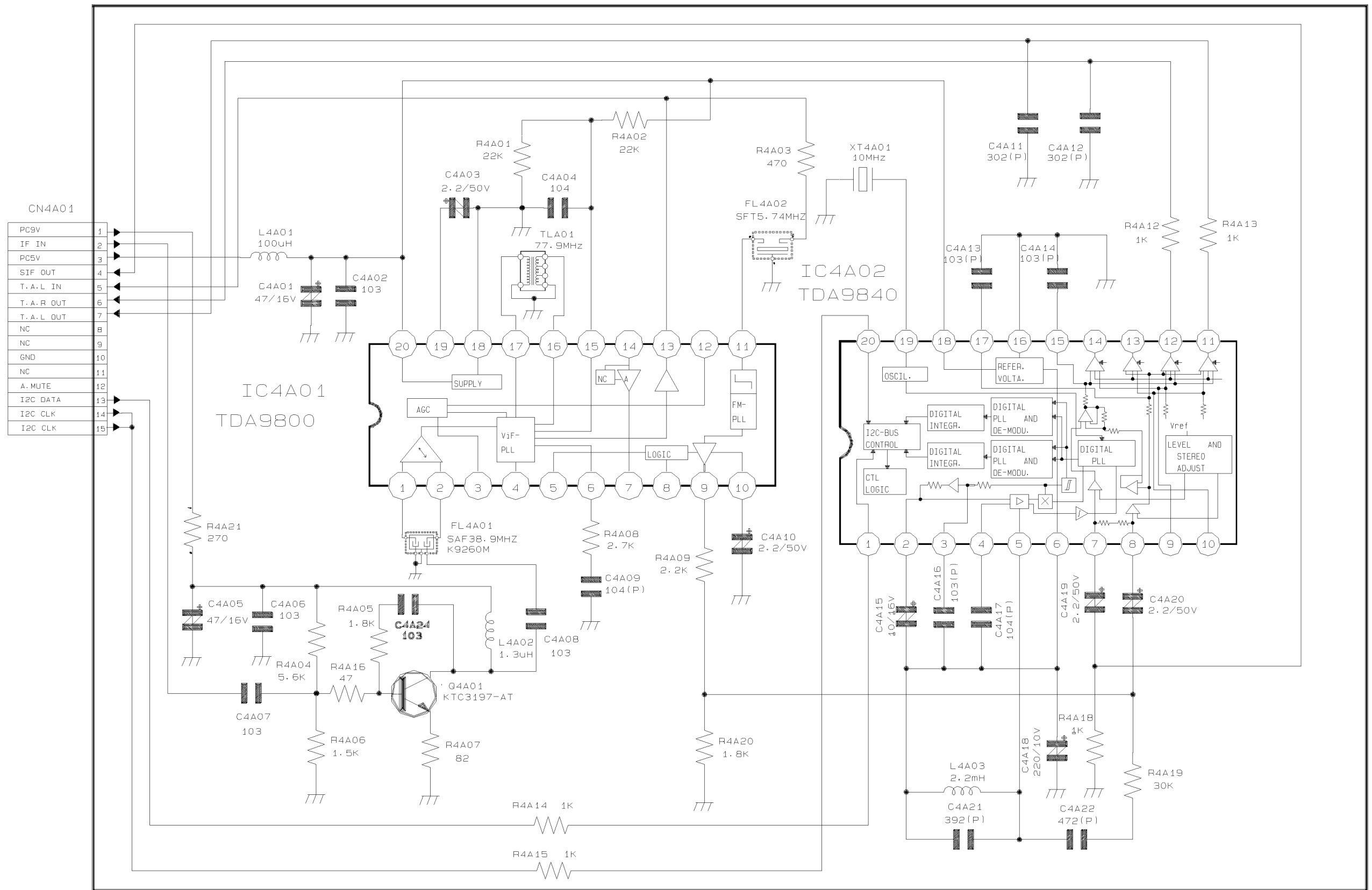


Note: Voltage level by each port: REC(PB) Ex) 5.2:REC, 5.2(2.5):REC(PB)

11-6 I/O



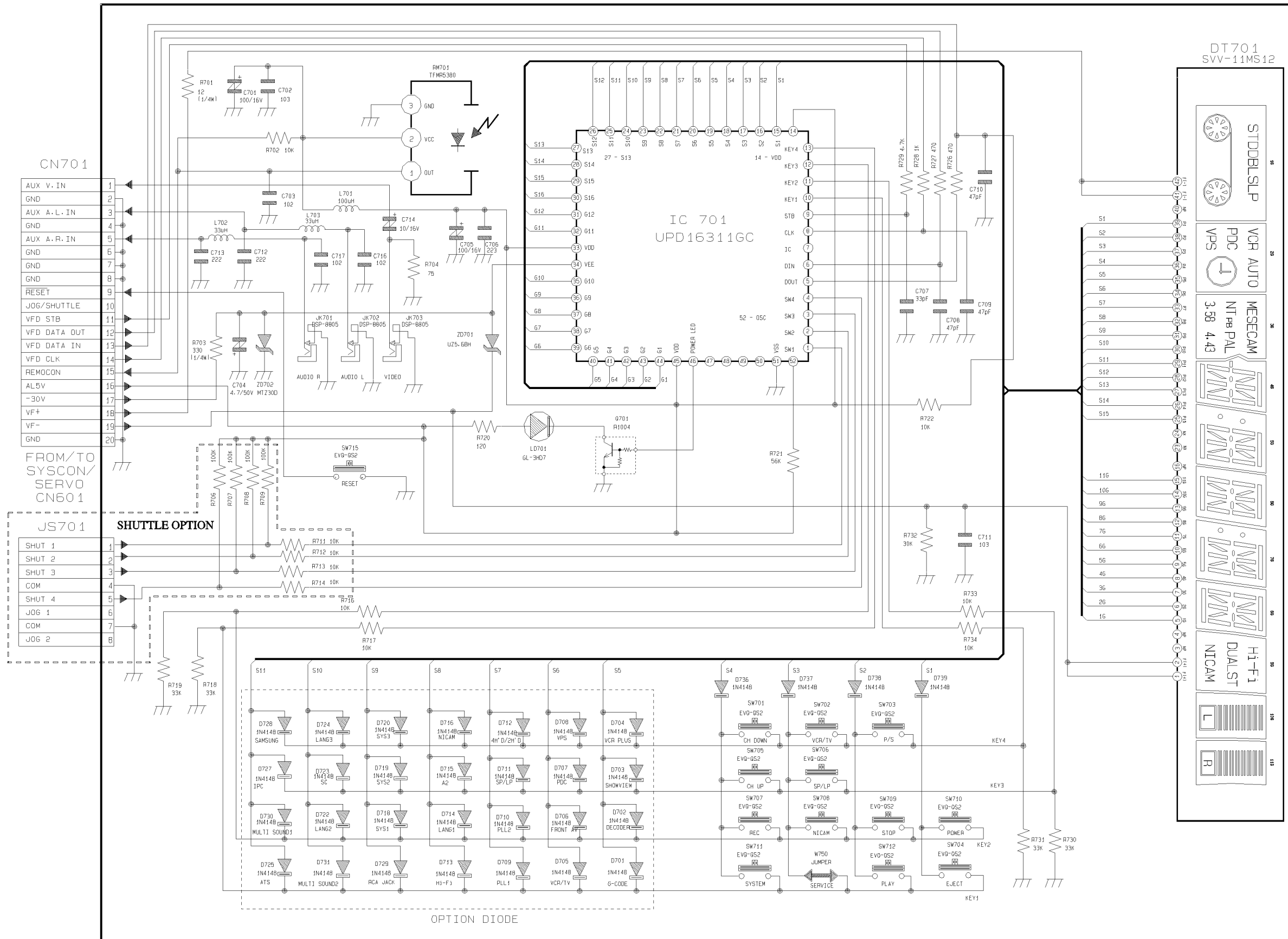
11-7 Sub



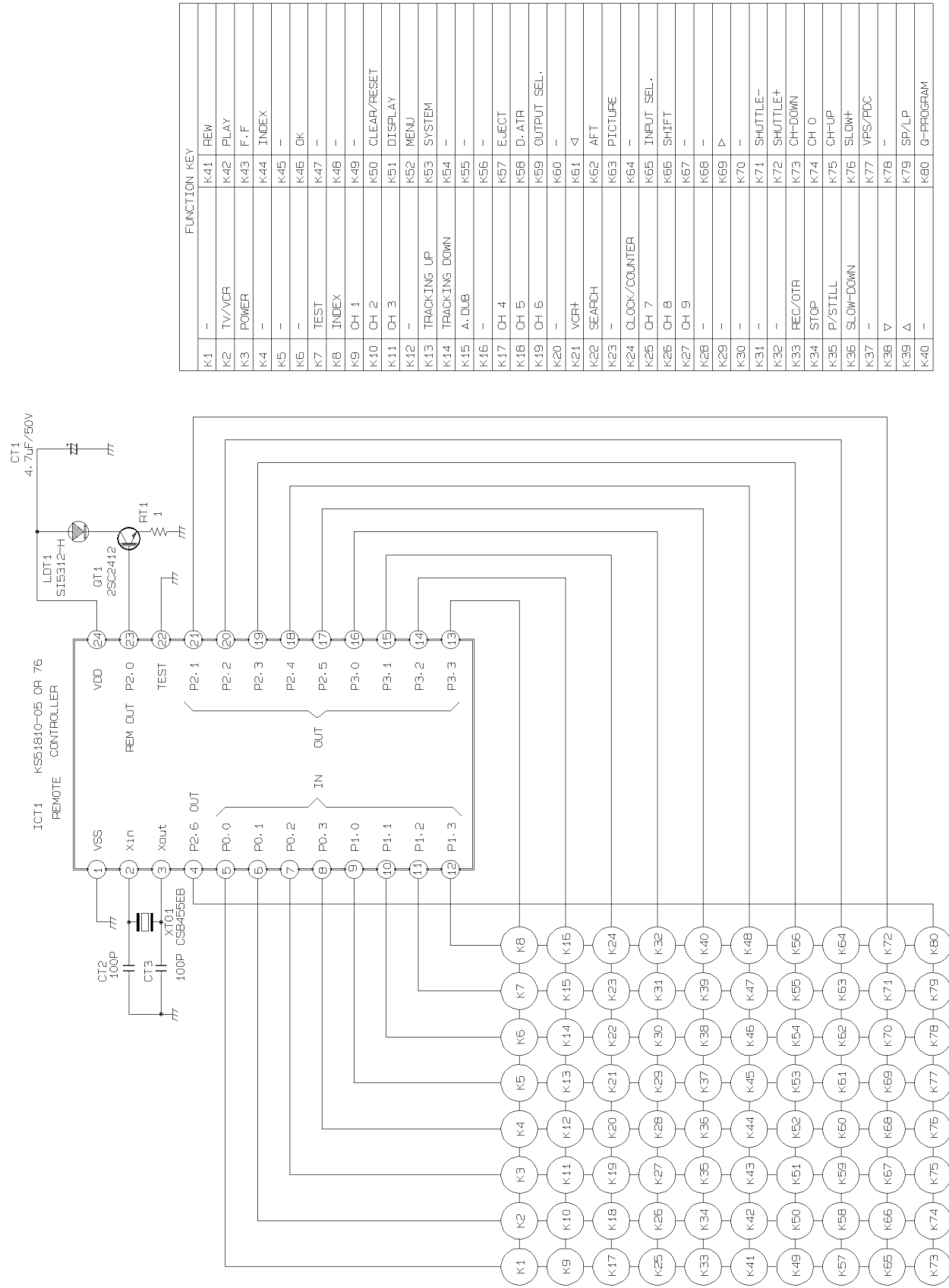




11-9 Function-Timer(SV -140B)



11-10 Remote-Contr ol (SV -A130B)



11-11 Remote-Contr ol (SV -A140B)

