

S/M No. : C1100KVESO

# Service Manual

**Vacuum Cleaner**

**Model: RCB-1100**

# DAEWOO



**DAEWOO ELECTRONICS CO., LTD.**

## *TABLE OF CONTENTS*

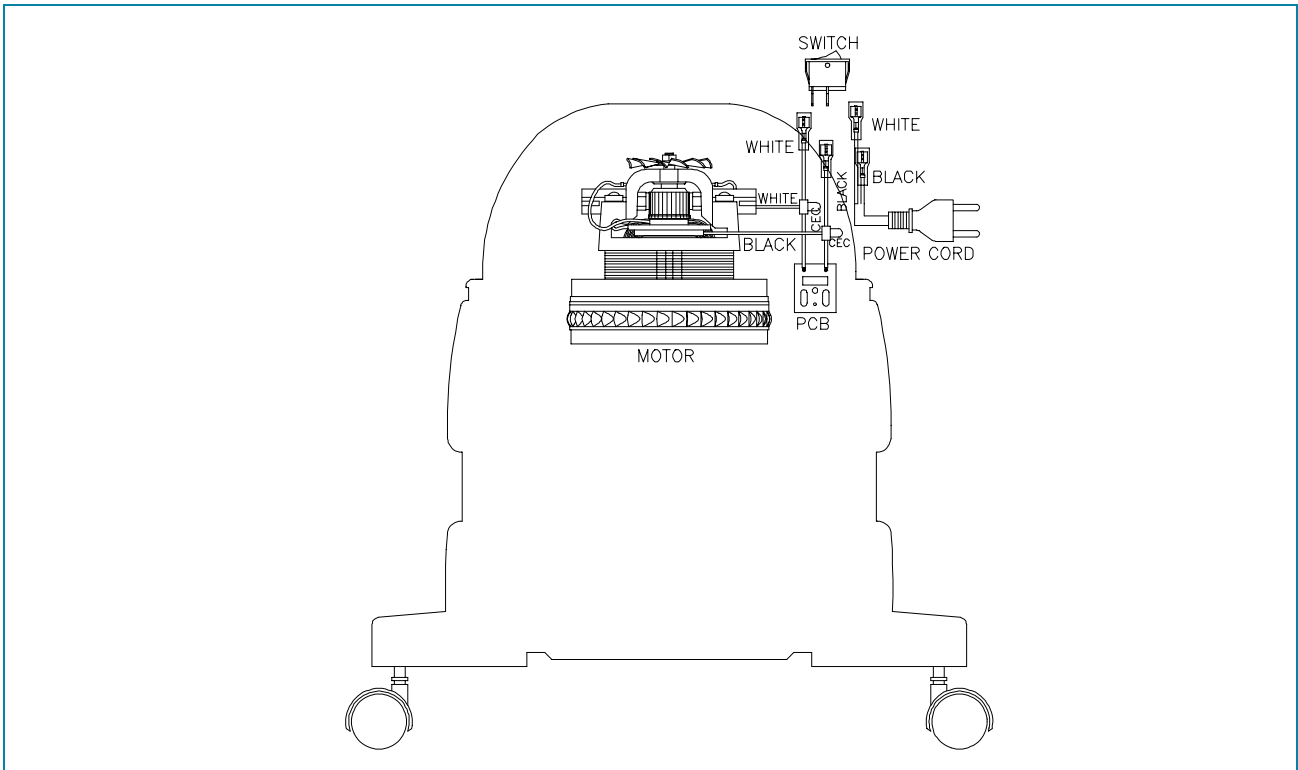
SPECIFICATION .....	2
DIAGRAM.....	3
WIRING DIAGRAM .....	3
EXPLODED VIEW AND PARTS LIST .....	4
1. BODY ASSEMBLY(3620406800) .....	4
2. COVER AS .....	5
3. DRY BRUSH AS .....	7
4. WET BRUSH AS .....	9
5. HOSE AS .....	10
6. ETC .....	11

# SPECIFICATION

MODEL	RCB-1100
Rated Voltage/frequency	AC 100V, 50/60HZ AC 110V, 50/60HZ AC 120V, 50/60HZ AC 127V, 50/60HZ AC 220V, 50/60HZ AC 230V, 50/60HZ AC 240V, 50/60HZ
Input Watt	MAX 1300W (CEE 1100W)
Tank Capacity	23L
Weight (Including Standar Accessories)	7.5Kg
Dimension(LXHXD)	340X480X340mm
Cord Length	7m
Power Control	ON/OFF
Hose	Non Current Flexible 1.5m
Extension Pipe	2 Plastics
Accessories	Main Nozzle (1pc.) (for Dry) queege Nozzle(1pc.) (for WeDusting brush Crevice tool)

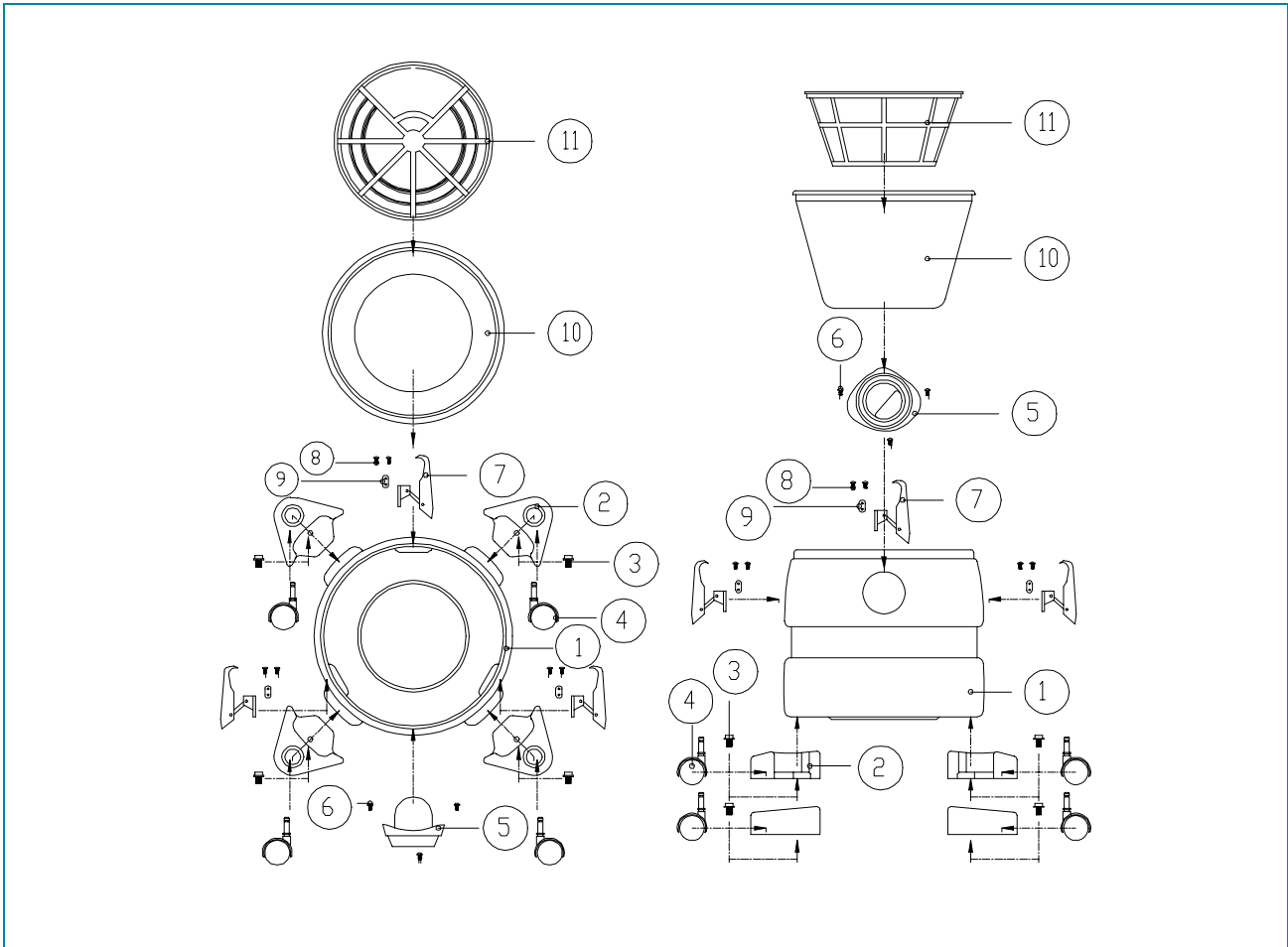
# DIAGRAM

## 1. WIRING DIAGRAM



# EXPLODED VIEW AND PARTS LIST

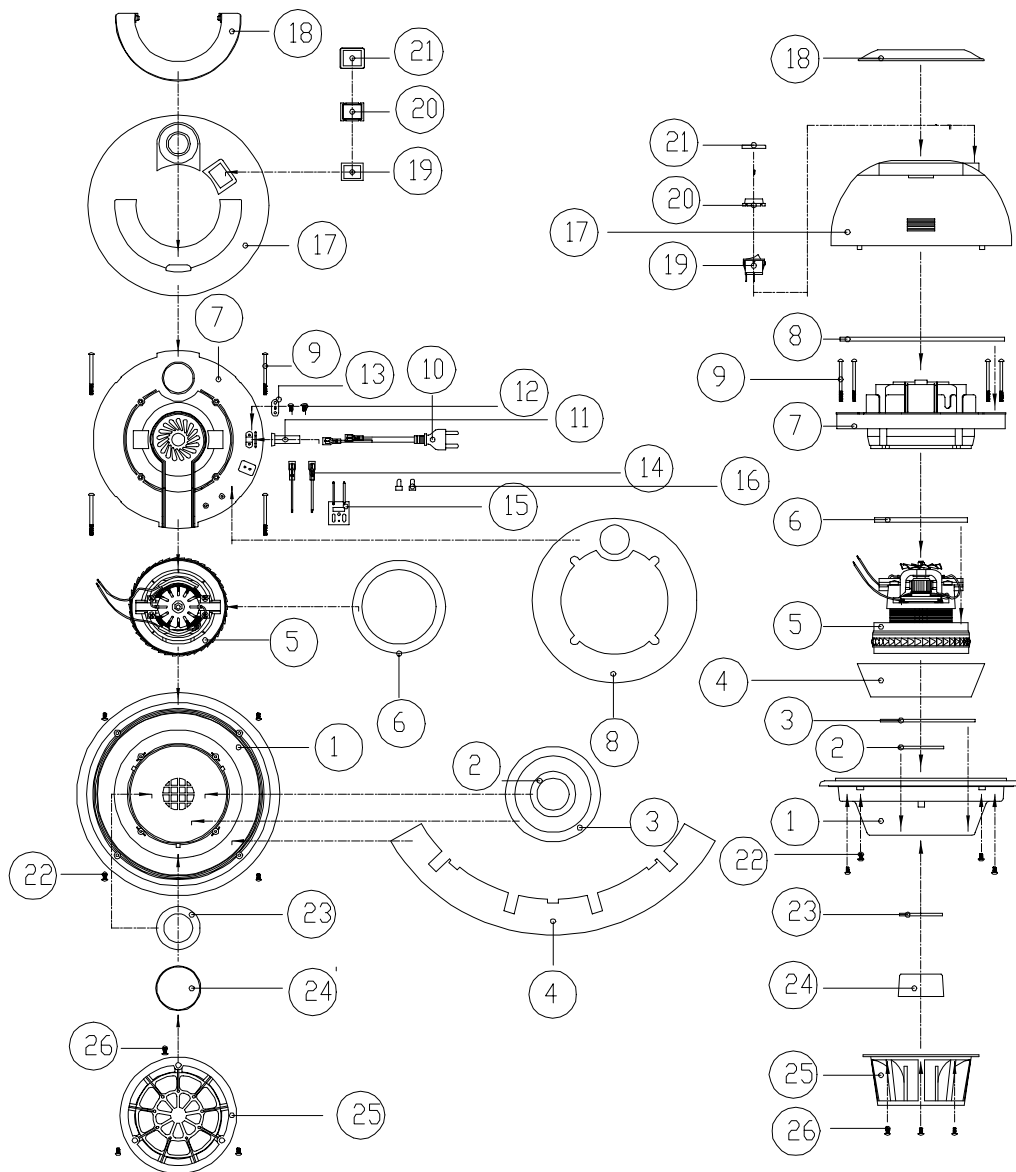
## 1. BODY ASSEMBLY(3620406800)



- BODY AS

NO	PART NAME	PART NO.	Q'TY	SPEC.	NOTE
1	BODY TANK		1	PP366+PE	
2	BRACKET ROLLER		4	PP	
3	BOLT		4	SWRM	
4	ROLLER AS		4	ASS'Y	
5	INLET		1	PP	
6	SCREW		3	T1 TRS 4*12 MFCR	
7	CLAMP AS		3	ASS'Y	
8	SCREW		6	T2 TRS 4*12 MFZN	
9	HOLDER CLAMP		3	ABS	
10	CLOTH FILTER		1	P.E..T. + RUBBER	
11	NET		1	PP	

## 2. COVER AS

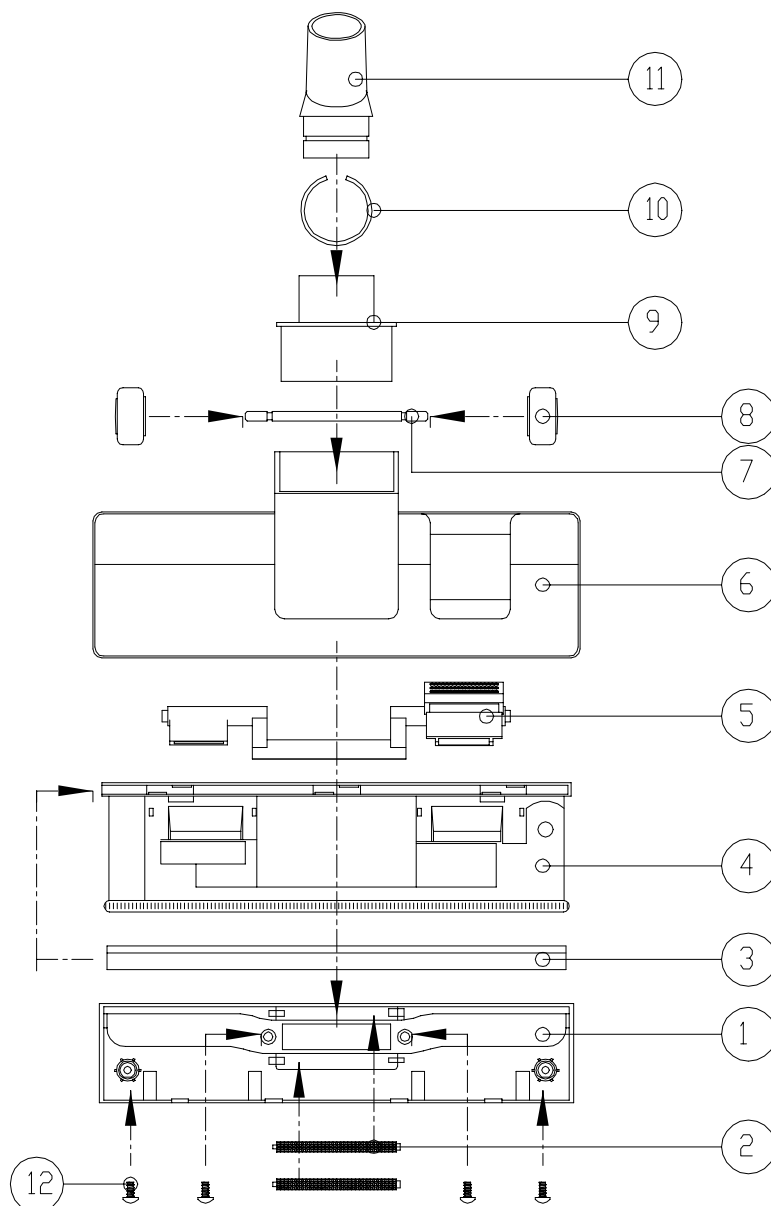


EXPLODED VIEW AND PARTS LIST

- COVER AS

NO	PART NAME	PART NO.	Q'TY	SPEC.	NOTE
1	CASE MOTOR DOWN		1	PP	
2	SEALING MOTOR		1	RUBBER FOAM	
3	ABSORBER MOTOR		1	RUBBER FOAM	
4	FELT CASE DOWN		1	FELT 5T	
5	MOTOR		1	100V/1200W 'F'CLASS	
				110V/1200W 'F'CLASS	
				120V/1200W 'F'CLASS	
				127V/1200W 'F'CLASS	
				220V/1200W 'F'CLASS	
				230V/1200W 'F'CLASS	
				240V/1200W 'F'CLASS	
6	SPONGE MOTOR		1	SPONGE	
7	CASE MOTOR COVER		1	PP	
8	FELT COVER		1	FELT 5T	
9	SCREW MACHINE		4	MFCR	
10	POWER CORD		1	HVTFK 1.25mm <sup>2</sup> * 2C	JAPAN EUROPE KS CHILE
				H05VVF 1.25mm <sup>2</sup> * 2C	
				HVCTF 1.25mm <sup>2</sup> * 2C	
				H05VVF 1.25mm <sup>2</sup> * 2C, 4 φ	
11	BUSHING		1	PVC	
12	SCREW		2	T2S TRS 4*14 MFZN	
13	HOLDER CORD		1	ABS	
14	HARNESS		2	1.25mm <sup>2</sup>	
15	PCB AS		1	ASS'Y	
16	C.E.C		2	C.E.C. SM	
17	COVER TOP		1	ABS	
18	HANDLE		1	ABS	
19	SWITCH		1	AC 250V, 16A	
20	COVER SWITCH		1	SEALING CAP	
21	CAP SWITCH		1	PP	
22	SCREW		4	MFCR	
23	ABSORBER FLOAT		1	RUBBER FOAM	
24	FLOAT CAP		1	PP	
25	FRAME FLOAT		1	PP	
26	SCREW		3	T2S TRS 4*8 MFZN	

## 3. DRY BRUSH AS





---

---

**EXPLODED VIEW AND PARTS LIST**

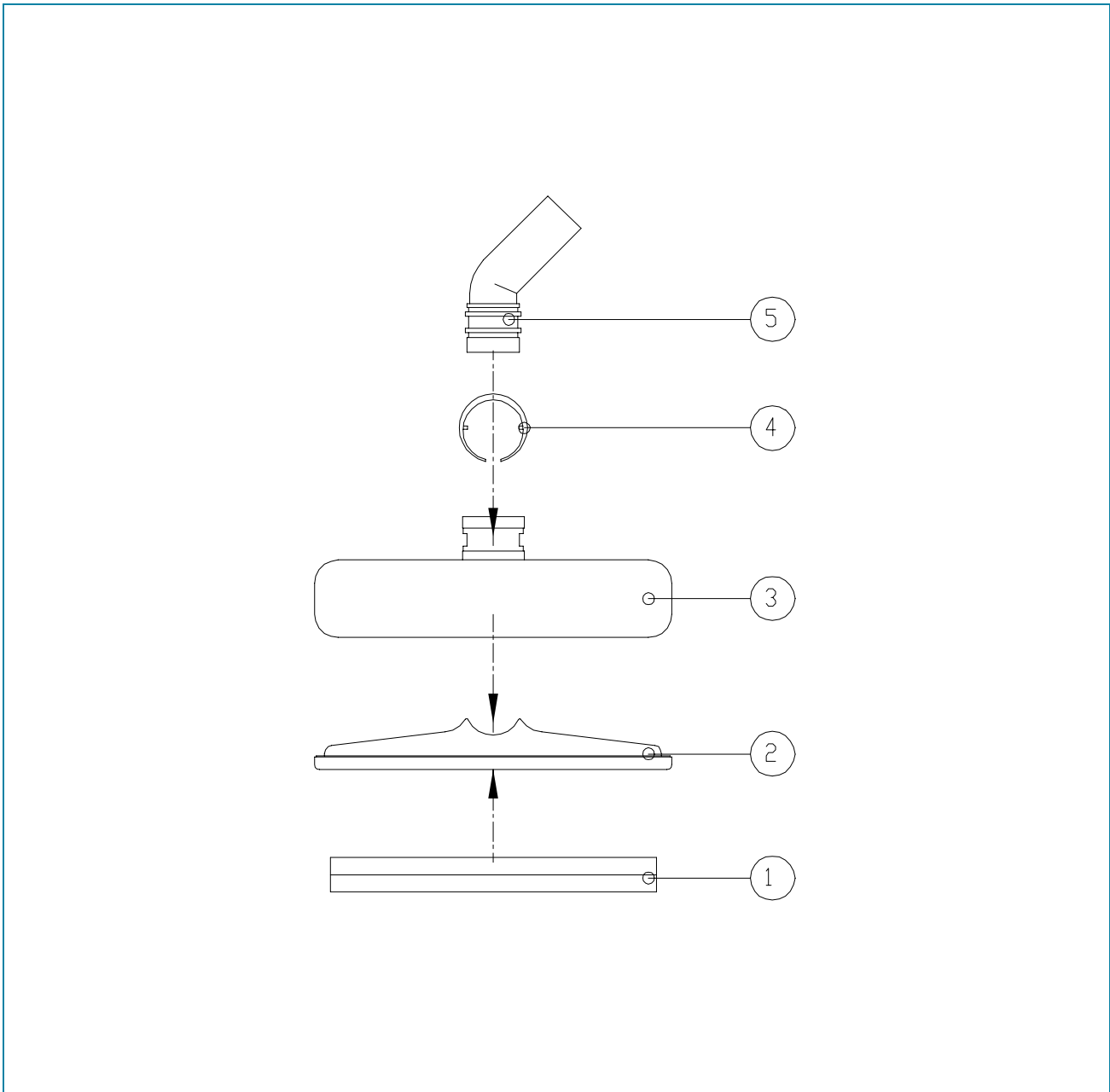
---

---

- DRY BRUSH AS

NO	PART NAME	PART NO.	Q'TY	SPEC.	NOTE
1	BRUSH BODY		1	PP	
2	PICKER LITTER		2	ABS	
3	BLADE		1	PVC	
4	BRUSH AS		1	ASS'Y	
5	LEVER BUTTON		1	ABS	
6	COVER BRUSH		1	PP	
7	SHAFT ROLLER		1	SWRM	
8	ROLLER AS		2	ABS+PVC	
9	NECK PIPE		1	ABS	
10	SNAP RING		1	SWRM	
11	PIPE BRUSH		1	ABS	
12	SCREW		4	MFCR	

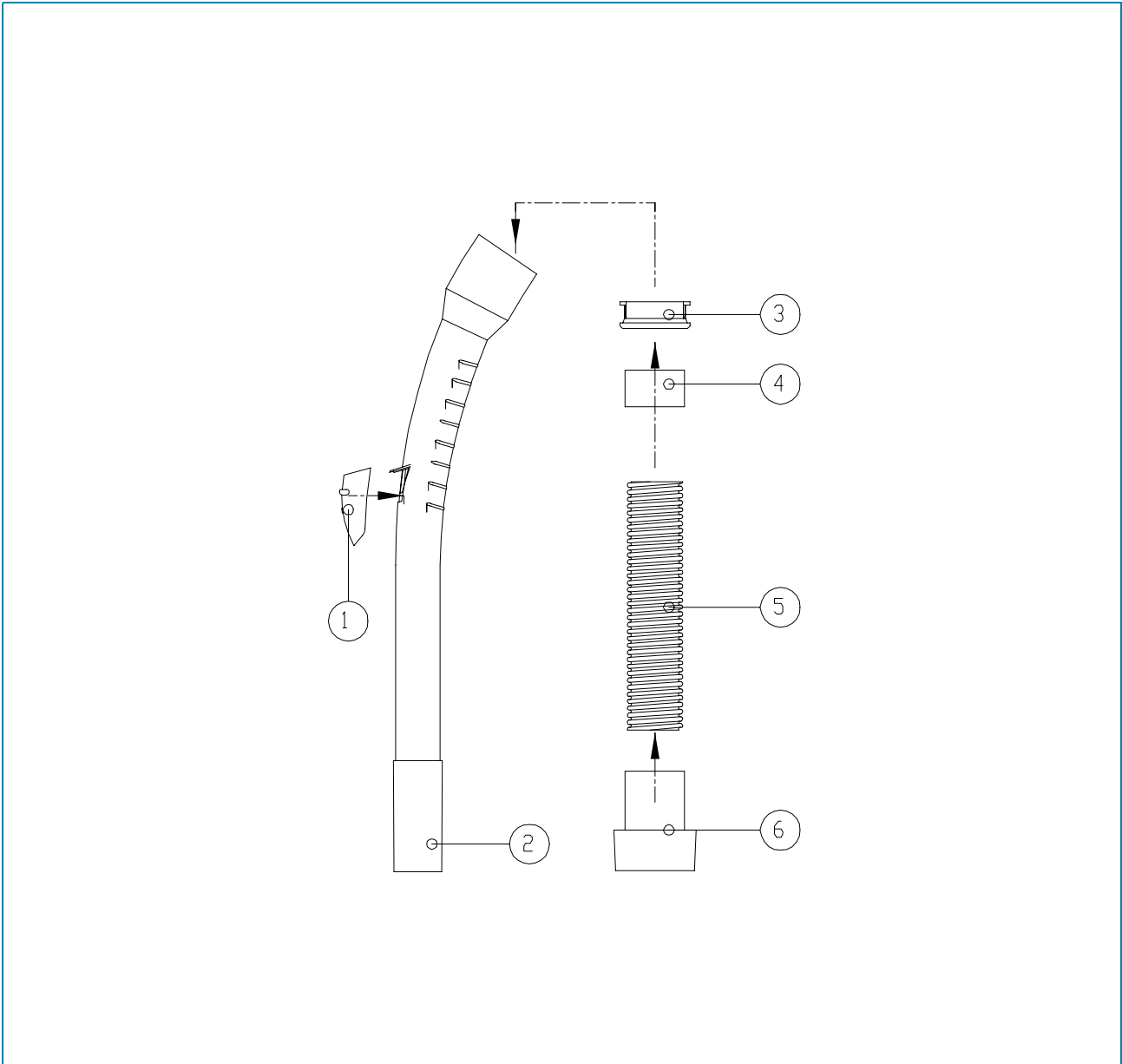
## 4. WET BRUSH AS



- WET BRUSH AS

NO	PART NAME	PART NO.	Q'TY	SPEC.	NOTE
1	BLADE		2	PVC	
2	BODY BRUSH		1	ABS	
3	COVER BRUSH		1	ABS	
4	CUFF RING		1	PA	
5	PIPE BRUSH		1	ABS	

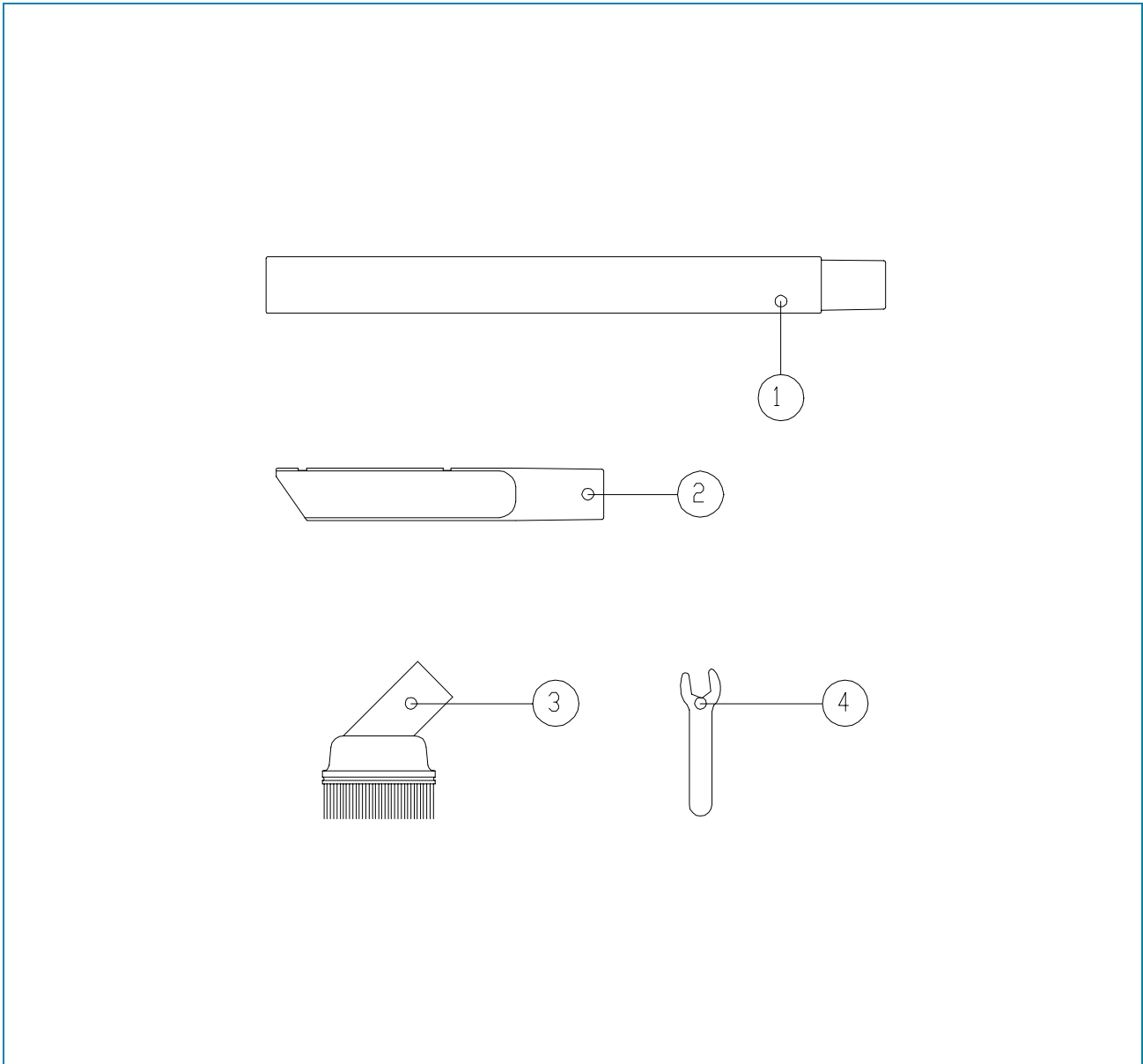
5. HOSE AS



- HOSE AS

NO	PART NAME	PART NO.	Q'TY	SPEC.	NOTE
1	COVER HOSE		1	ABS	
2	PIPE HOSE		1	ABS	
3	CLAMP HOSE		1	ABS	
4	ADAPTER HANDLE		1	ABS	
5	HOSE		1	EVA	
6	ADAPTER PIPE		1	ABS	

## 6. ETC



- ETC.

NO	PART NAME	PART NO.	Q'TY	SPEC.	NOTE
1	PIPE		2	ABS	
2	NOZZLE CREVICE		1	ABS	
3	DUSTING BRUSH		1	ABS	
4	SPANER		1	SWRM	

# **DAEWOO**

**DAEWOO ELECTRONICS CO., LTD**

686, AHYEON-DONG MAPO-GU  
SEOUL, KOREA  
C.P.O. BOX 8003 SEOUL, KOREA  
TELEX : DWELEC K28177-8  
CABLE : "DAEWOOELEC"  
E-mail : G7F00E@web.dwe.co.kr  
FAX : 02) 360-8184  
TEL: 02) 360-8179-8180

**PRINTED DATE : NOV. 1998**