

DAEWOO

Service Manual Vacuum Cleaner

Model : RC-407



**DAEWOO ELECTRONICS CO., LTD.
OVERSEAS SERVICE DEPT.**

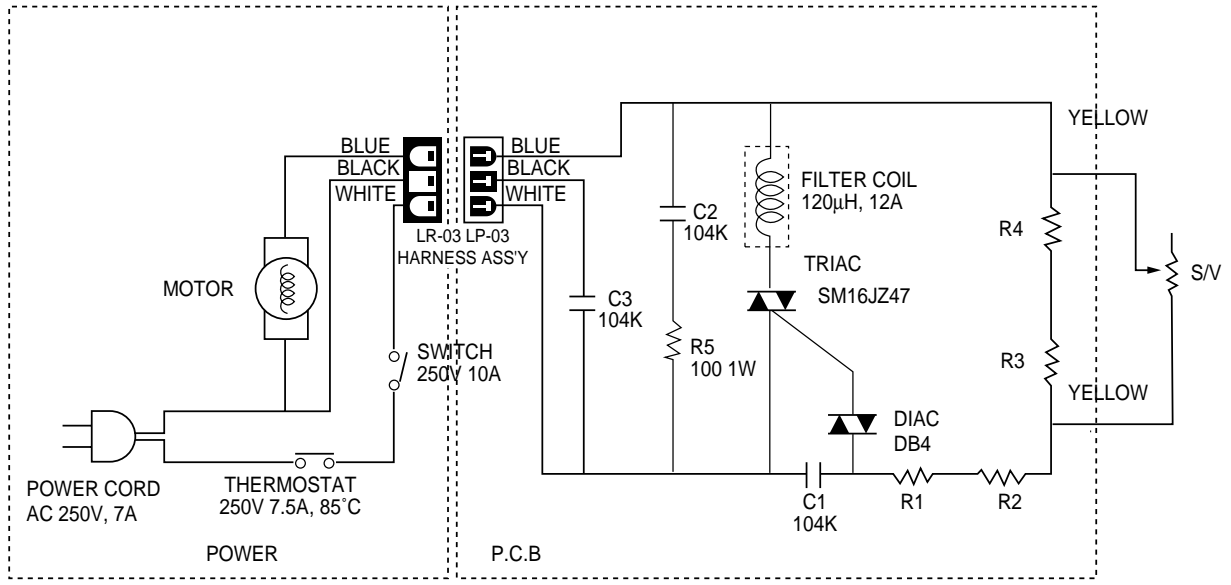
CONTENTS

1. SPECIFICATIONS	1
2. CIRCUIT DIAGRAM	2
3. CAUSE OF TROUBLE AND COUNTERMEASURE	3
4. DESCRIPTION	4
; DISCRIPTION LIST	5
5. EXPLODED VIEW AND PARTS LIST	6
; BODY (DOWN) ASS'Y	6
; BODY (DOWN) PARTS LIST	7
; COVER ASS'Y	8
; COVER PARTS LIST	9
; HOSE LINE ASS'Y	10
; HOSE LINE PARTS LIST	11
; SUCTION BRUSH ASS'Y	12
; SUCTION BRUSH PARTS LIST	13
; BOX FILTER ASS'Y	14
; BOX FILTER PARTS LIST	14
; ACCESSORY NOZZLES	15
; ACCESSORY NOZZLES PARTS LIST	15

1. SPECIFICATIONS

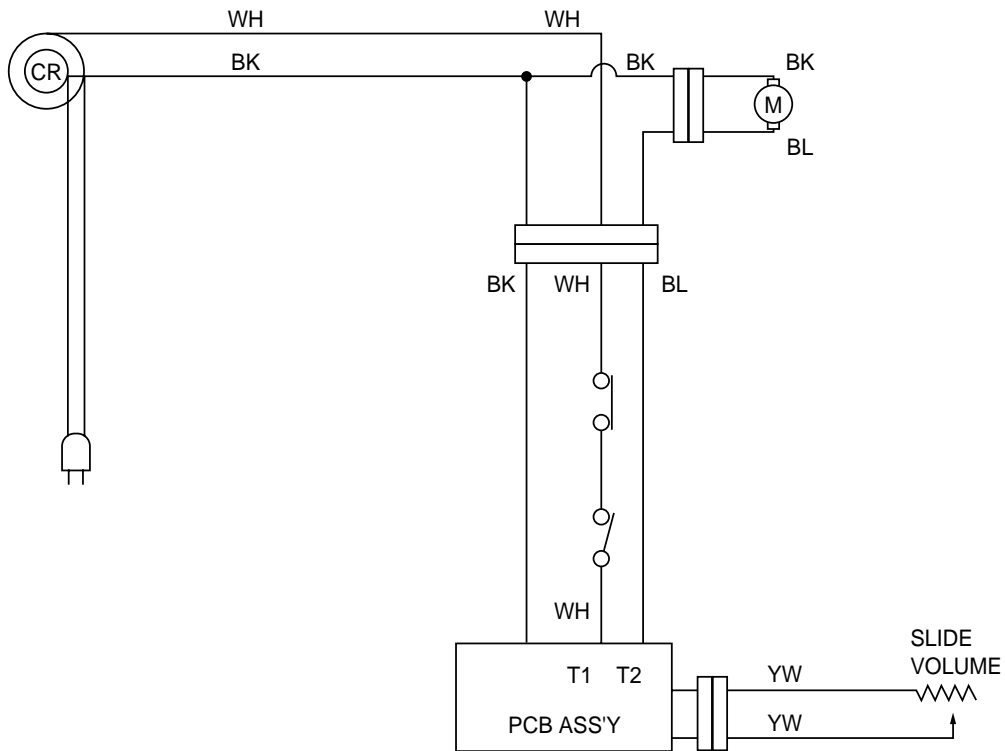
RATED VOLTAGE AND RATED FREQUENCY	AC 220V / 50Hz AC 230V / 50Hz AC 230V / 50, 60Hz AC 240V / 50 Hz
RATED INPUT	1200W
DIMENSION (W ; D ; H)	270 ; 482 ; 234(mm)
NET WEIGHT	7.3kg
CORD LENGTH	5m / 6m

2. CIRCUIT DIAGRAM



VOLTAGE	R1	R2	R3	R4	SLIDE VOLUME	THERMOSTAT
AC 110V/50, 60HZ	1KΩ 1/2W	1KΩ 1/2W	91KΩ 1/2W	91KΩ 1/2W	200KΩ	85°C
AC 220V/50HZ	10KΩ 1/2W	10KΩ 1/2W	180KΩ 1/2W	240KΩ 1/2W	500KΩ	85°C
AC 220V/60HZ	10KΩ 1/2W	10KΩ 1/2W	150KΩ 1/2W	160KΩ 1/2W	500KΩ	85°C
AC 230V/50,60HZ	10KΩ 1/2W	10KΩ 1/2W	180KΩ 1/2W	180KΩ 1/2W	500KΩ	85°C

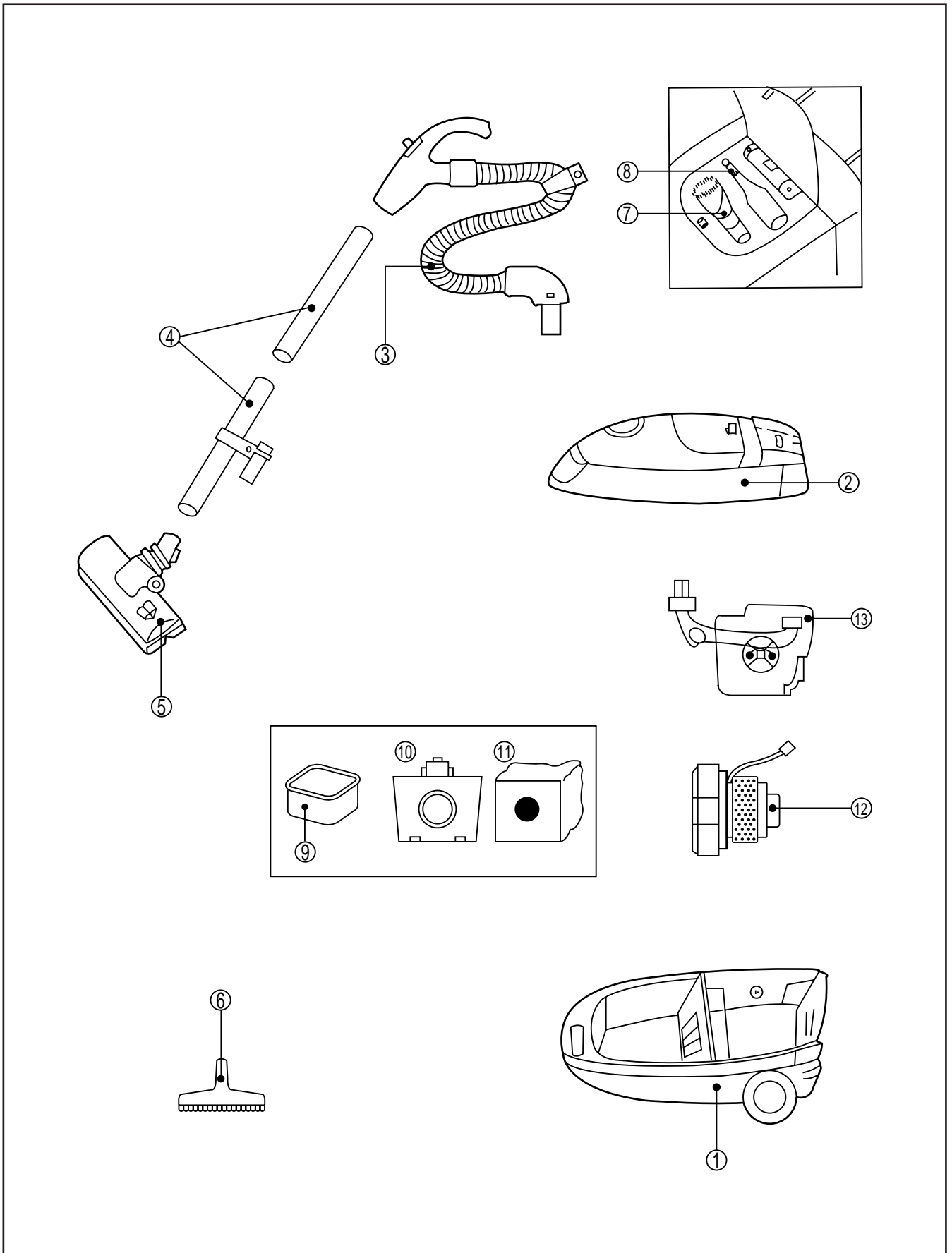
WIRING DIAGRAM



3. CAUSE OF TROUBLE AND COUNTERMEASURE

TROUBLE	CAUSE	COUNTERMEASURE
MOTOR DOES NOT ROTATE	BREAK POWER CORD (AT BLADE TIP OR ROOT OF PLUG)	REPLACE THE POWER CORD
	DEFECTIVE PCB	REPLACE
	BREAK THE LEAD WIRE	REPAIR (SOLDER OR USE CLOSED END TERMINAL)
	DEFECTIVE SWITCH	REPLACE THE SWITCH
	ABRASION CARBON OF THE MOTOR	REPLACE OR REPAIR
	BREAK IN OTHER CONNECTION	REPAIR
	DEFECTIVE SWITCH	REPLACE
MOTOR DOES NOT STOP EVEN IF THE SWITCH IS SET "OFF"	DEFECTIVE PCB	REPLACE
CORD IS NOT WOUND UP AT ALL	THE CORD IS DRIVEN OR TWISTED	REPAIR
	INSUFFICIENT RESERVED WINDING	REPAIR
	BROKEN THE SPRING OF CORD REEL	REPAIR
CORD DOESN'T STOP AT ARBITRARY POSITION	ABRASION OF THE BRAKE ROLLER	REPLACE
*Be careful when breaking up the cord reel. The reel spring can spring out of the cover.		
SUCTION POWER IS LOW	DUST IS SUCKED EXCESSIVELY INTO THE PAPER BAG	REPLACE THE PAPER BAG
	CLOGGING OR BREAK OF THE HOSE OR EXTENSION PIPE	REMOVE THE OBSTACLE OR REPLACE HOSE/E.P.
	THE FILTER BOX IS FILLED WITH DUST	REMOVE DUST OF THE FILTER BOX
	DEFECTIVE MOTOR	REPLACE

4. DESCRIPTION

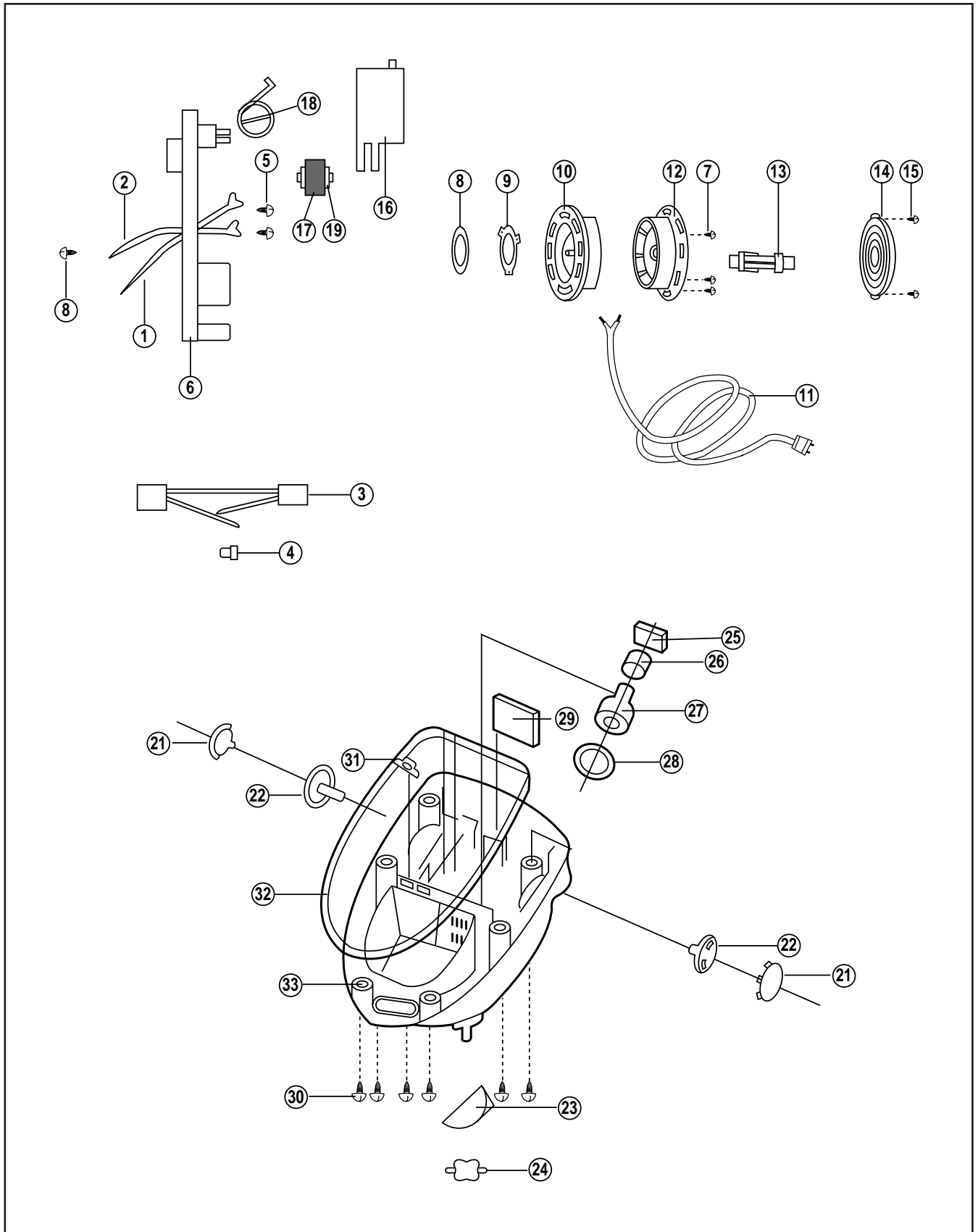


Description List

NO	PART NAME	PART CODE	SPECS.	QTY
1	BODY ASS'Y	3620401500	-	
2	COVER ASS'Y	3621404800	220V 50HZ	
	COVER ASS'Y	3621404810	230V 50HZ	
3	HOSE ASS'Y	3623200900	1.3m E.V.A	
	HOSE ASS'Y	3623204500	1.8m E.V.A	
4	PIPE AS	3624404500	STEEL	
	PIPE AS	3624404600	BLOWER	
5	BRUSH ASS'Y	3629301600	-	
6	UP HOLSTERY NOZZLE	4569A68000	PP	
7	DURSTING BRUSH	3629301500	ABS	
8	NOZZLE CREVICE	3628100300	PP	
9	DUST BOX	3621901000	PE NON WOVEN MAT	
10	DUST BAG HOLDER	3623001700	-	
11	DUST BAG	4560A57001	PAPER	
	DUST BAG	3621901610	CLOTH	
12	MOTOR ASS'Y	3662511400	230V/50Hz 1100W(F)	
		3962110810	240V/50Hz 1100W(F)	
		3962230300	110V/60Hz 1200W(E)	
		3962330510	220V/50Hz 1200W(E)	
		3962510230	230V/50Hz 1200W(E)	
13	CORD REEL ASS'Y	3629500800	250V/7A 5m	KS
		3629501000	250V/7A 6m	KS
		3629504200	250V 10/16A 6m	
		3629501005	250V 7A 5m	ISRAEL
		3629504210	250V 7A 6m	U. K
		3629504500	250V 7A	ARENTINA

5. EXPLODED VIEW AND PARTS LIST

BODY (DOWN) ASS'Y



BODY (DOWN) PARTS LIST

NO	PART NAME	PART CODE	SPECS.	QTY
1	TERMINAL AS	3628701900	TERMINAL WIRE (WH)	1
2	TERMINAL AS	3628703100	TERMINAL WIRE (BK)	1
3	HARNESS	3622705600		1
4	CEC	4505A63030	ST CE-230	1
5	SCREW TAPPING	7121401011	T2S PAN 4 10 MFZN	2
6	BRACKET CR	3620600300	ABS	1
		3620600310	PC	
7	SCREW TAPPING	7121401411	T2S PAN 4 14 MFZN	4
8	TERMINAL OB	3628700100	C2600P	1
9	TERMINAL OA	3628700200	C2600P	1
10	BOBBIN	3629200200	ABS	1
11	POWER CORD	WKH14N7811	ISRAEL	1
		3621301000	KS	
		4568F38022	CHILE	
		4569A36010	SEMKO	
12	BOBBIN	3629200100	ABS	1
13	REEL SHAFT	4569C35050	ABS	1
14	SPRING REEL AS	3625102000	SUS 301 EH	1
15	SCREW TAPPING	7121300811	T2S PAN 3 8 MFZN	2
16	LEVER CR	3623700700	ABS	1
17	STOPPER CR	4569C35082	NBR	1
18	SPRING CR LEVER	3625102300	HSW3	1
19	STOPPER FRAME	4565A35070	POM	1
20	WAX VASELINE	2291140301		
21	COVER BACK CASTER	4569C20070	ABS	2
22	CASTER FRAME BACK	4569C20020	PP	2
23	BRACKET FRONT CASTER	4569C20040	PP	1
24	CASTER FRONT	4568A45020	PP	1
25	CAP MOTOR BACK	4569C10040	NR	1
26	MOTOR SPONGE	4569C10070	POLY URETHANE FOAM	1
27	V/C MOTOR	3962330330	220V, 1200W O/S	1
		3962510230	230V, 1200W E-class	
		3962511300	230V, 1200W F-class	
		3962610600	240V, 1200W	
28	CAP MOTOR FRONT	4569A20040	NR	1
29	BODY EXHAUST FILTER	4569C20060	POLYESTER	1
30	SCREW TAPPING	7121402011	T2S PAN 4 20 MFZN	6
31	DA PACKING-R	4569R20080	NR	1
32	PROTECTOR	4569C20030	PVC-S	1
33	BODY	4569C20010	ABS	1

COVER PARTS LIST

NO	PART NAME	PART CODE	SPECS.	QTY
1	LATCH PUSH	4519F35000		1
2	COVER NOZZLE	3621405100	ABS	1
3	COVER DM	4560F30040	ABS	1
4	SCREW TAPPING	7121301211	T2S PAN 3X12 MFZN	2
5	VALVE	3625400100	LDPE	1
6	PACKING	3624000400	PVC-S	1
7	HOUSING	4560F23010	SAN	1
8	DUST METER	4560F23030	ABS (RED)	1
9	DUST METER	4560F23060	ABS (GREEN)	1
10	SPRING	3625102500	SUS	1
11	ELBOW DM	4569C23050	PVC-S	1
12	COVER DUST	3621405000	ABS	1
13	CLAMP COVER	3621201000	ABS	1
14	SPRING	3625102400	HSW3	1
15	SOCKET	3629800900	ABS	1
16	PACKING SOCKET	3624000700	TPE	1
17	PLATE	3624500500	ABS	1
18	SCREW TAPPING	7121401411	T2S PAN 4X14 MFZN	7
19	COVER BODY	3621404900	ABS	1
20	PCB AS	3624302100	220~240V/50HZ	1
		3624302130	230V/50HZ (SEMKO)	
		3624302150	230V/50, 60HZ	
21	SCREW TAPPING	7121401011	T2S PAN 4X10 MFZN	2
22	VR SLIDE	5V2504001B	500K	1
23	LABEL CONTROL	3623505700	PC FILM	1
24	SCREW TAPPING	7121402011	T2S PAN 4X20 MFZN	2
25	SPRING	4569A24030	HSW3	3
26	BUTTON CR	3626601100	ABS	1
27	FRAME BUTTON	3622200300	ABS	1
28	BUTTON SWITCH	3626601200	ABS	1
29	KNOB	3623400300	ABS	1
30	GUIDE KNOB	3622501100	ABS	1
31	SCREW TAPPING	7121401411	T2S PAN 4X14 MFZN	4
32	COVER TOP	3621405300	ABS	1
33	SW PUSH	4569A37000	AC 250V/10A	1
34	THERMOSTAT	3629000600	65°C 250V 7.5V	1
35	HARNESS	3622706200		1
36	SCREW TAPPING	7121301211	T2S PAN 3X12 MFZN	1

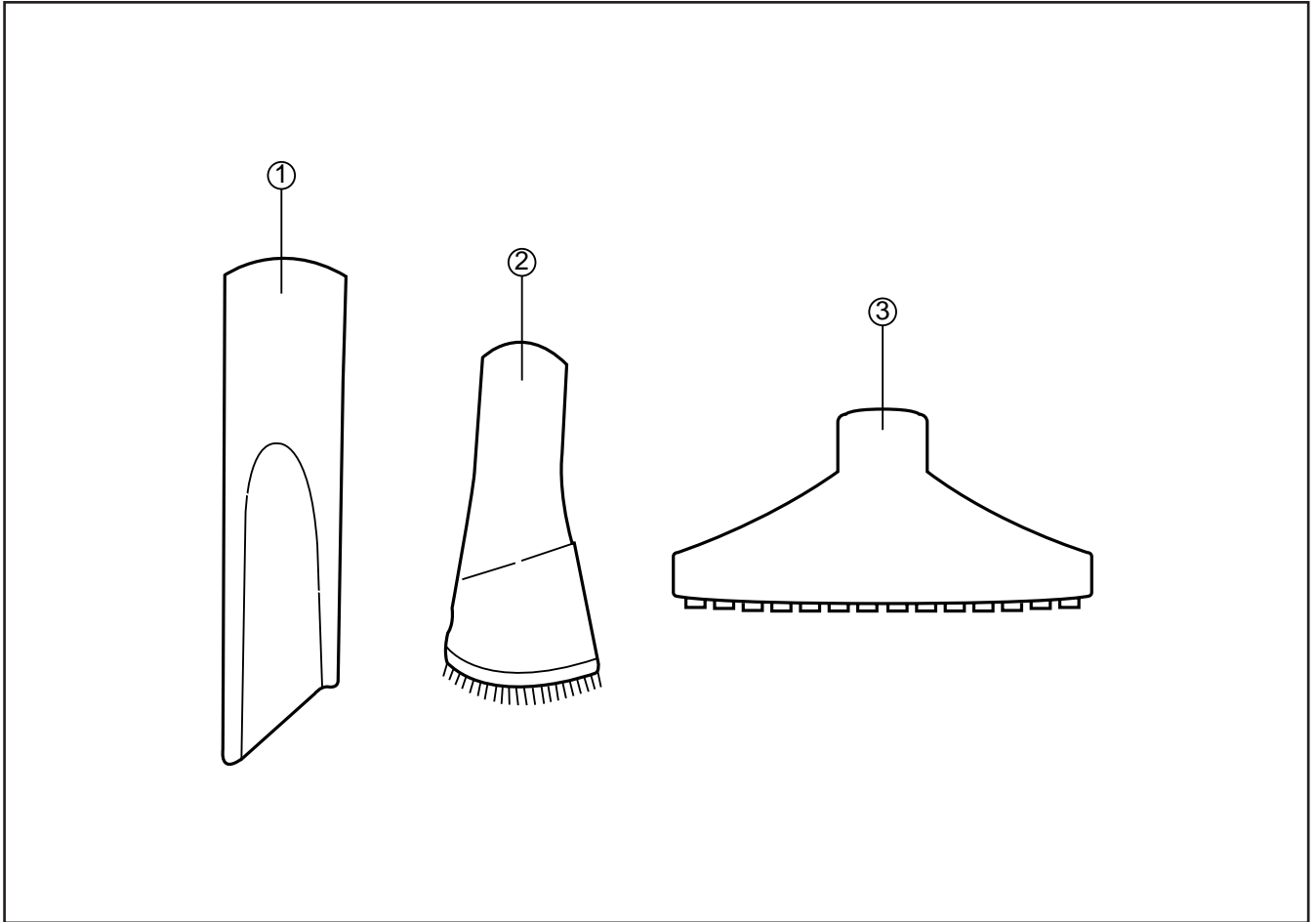
HOSE LINE PARTS LIST

NO	PART NAME	PART CODE	SPECS.	QTY
1	PIPE HOSE	3624402100	ABC	1
2	VALVE	3625400200	ABS	1
3	COVER PIPE	3621405600	ABS	1
4	SCREW TAPPING	7121301211	T2S PAN 3X12 MFZN	2
5	HOSE	3623201100	EVA	1
6	CUFF HOSE	3626800200	LDPE	2
7	HOUSING	4560F23010	SAN	1
8	ADAPTER	3629100200	ABS	1
9	CLAMP ADAPTER	3621200700	PA	1
10	BUTTON ADAPTER	3626601300	ABS	1
11	ELBOW DM	4569C23050	PVC-S	1
12	SCREW TAPPING	7188401011	WASHER ATTACHED	2
13	HOOK HOSE	4560F77000	PP	1

SUCTION BRUSH PARTS LIST

NO	PART NAME	PART CODE	SPECS.	QTY
1	PIPE BRUSH	3624402400	PP	1
2	NECK	3628000700	PP	1
3	HOOK	3623100100	PA	2
4	COVER BRUSH	3621405400	PP	1
5	COVER AIR	3621406200	PP	1
6	SHAFT	3624900400	SWRM + MFZN	2
7	ROLLER	3624701000	PA + TPE	2
8	RING E	7402004011	ER-4 MFZN	2
9	CAP ROLLER	3620901500	PA	2
10	LEVER BRUSH	3623700800	ABS	1
11	PLATE BRUSH AS	3624500800	ASSY	1
12	SPRING	3625102600	HSW3	2
13	ROLLER	3624700600	PA + TPE	2
14	PIN	3628200200	SWRM MFZN	2
15	PLATE BRUSH	3624500600	SUS T=0.5	1
16	PICKER LITTER	3627000100	ABS + NYLON	2
17	SCREW TAPPING	7121401411	T2S PAN 4 X 14 MFZN	4

ACCESSORY NOZZLES



ACCESSORY NOZZLES PARTS LIST

NO.	PART NAME	CODE	SPECS.	Q'TY
1	NOZZLE CREVICE	3628100300	PP	1
2	DUSTING BRUSH	3629301500	ABS + NYLON	1
3	NOZZLE UPHOLSTERY	4569A68000	PP	1