

CONTENTS

1. SPECIFICATION	2
2. DIAGRAM	3
1) WIRING DIAGRAM.....	3
2) CIRCUIT DIAGRAM	3
3. CAUSE OF TROUBLE AND COUNTERMEASURE	4
4. COUNTERMEASURE DETAIL	5
5. EXPLODED VIEW AND PARTS LIST	9
1) BODY ASSEMBLY	9
2) COVER ASSEMBLY	11
3) HOSE LINE ASSEMBLY.....	13
4) BRUSH ASSEMBLY.....	15

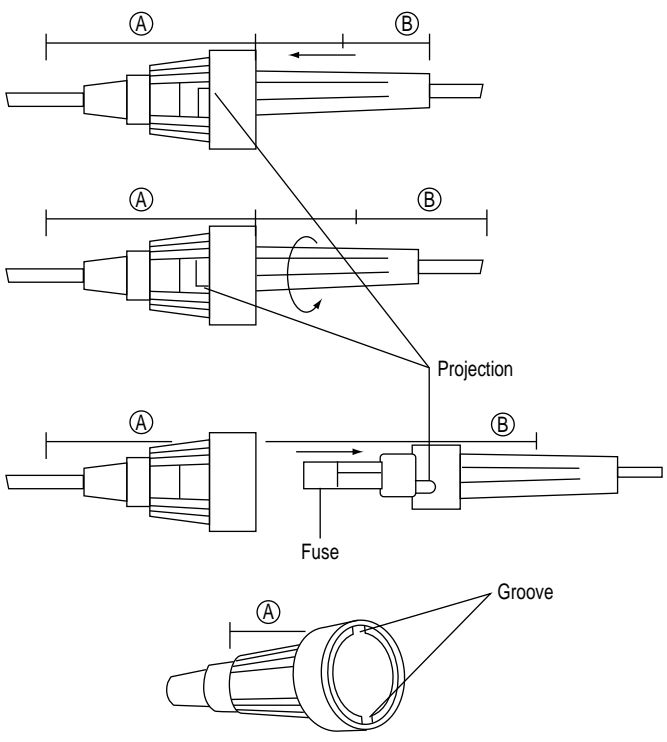
1. SPECIFICATION

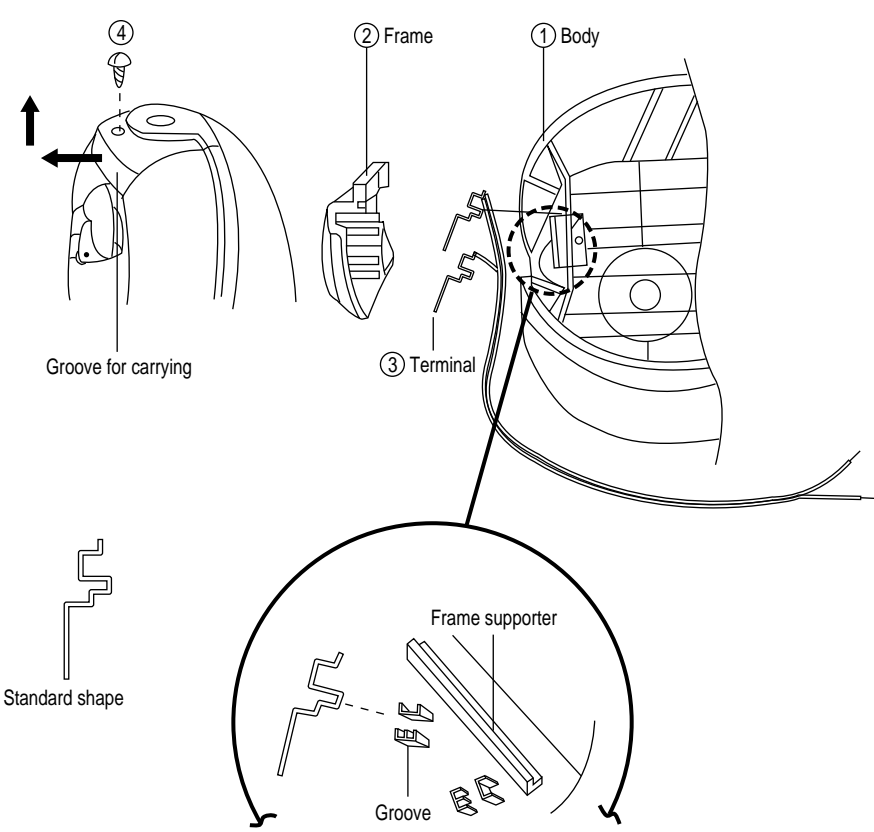
RATING		220V, 50~60Hz
INPUT		1010W
AIR WATT		330W
VACUUM		1,050 mmAq.
AIR FLOW		1.11 m/min.
NOISE		65 dB
DIMENSION (L X H X W)		356 X 221 X 246mm
POWER CORD		RETRACTABLE 5m
SUCTION CONTROL		ELECTRIC SLIDE
DUST METER		MECHANICAL
PARTS KEEPING		STAND KEEPING
DUST BAG CAPACITY		2.2 Liter
POWER SWITCH		ON HOSE HANDLE
FUSE RATING		250V, 6A
WEIGHT	BODY	3.8Kg
	NET	4.9Kg
FILTER	DUST CAVITY	2-LAYER PAPER BAG NON-WOVEN FABRIC MAT
	MOTOR CAVITY	NON-WOVEN FABRIC MAT
HOSE		CURRENT 1.3m
EXTENTION PIPE		PLASTIC 2 EA
BRUSH		CLEAN
SPARE PAPER BAG		2 EA

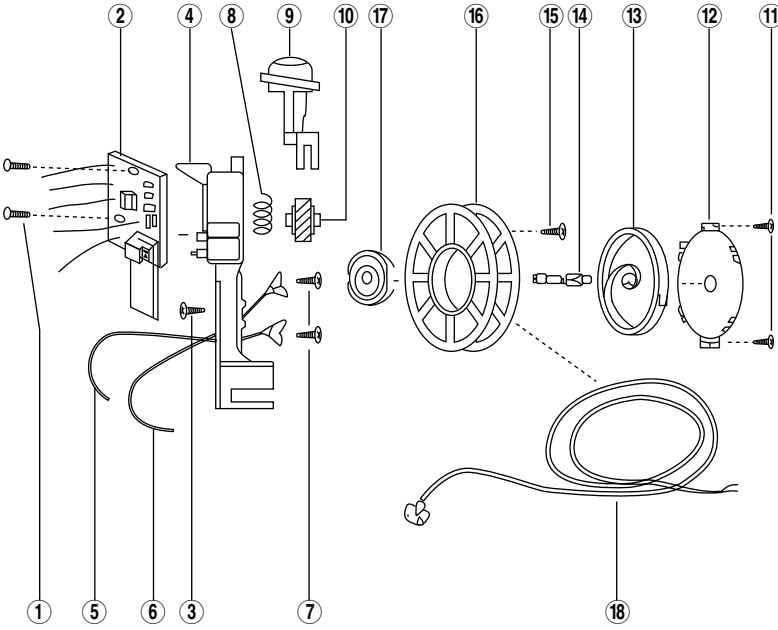
3. CAUSE OF TROUBLE AND COUNTERMEASURE

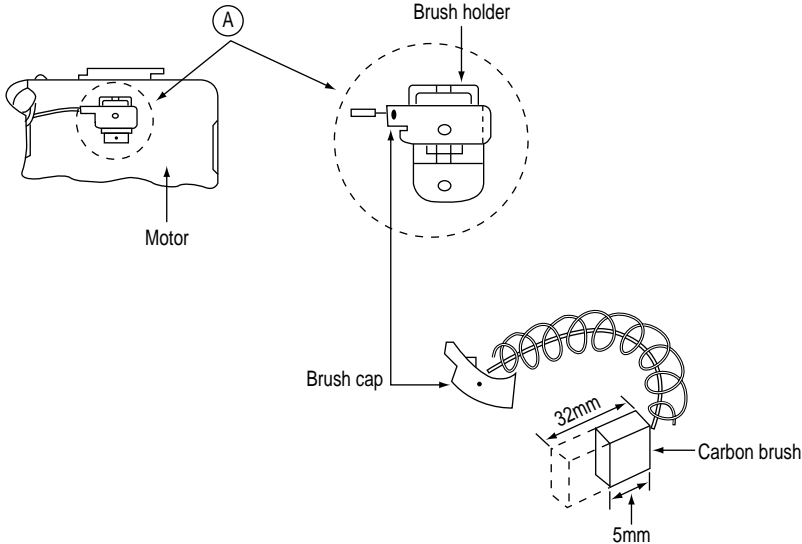
TROUBLE	CHECK POINT	CAUSE	COUNTERMEASURE
Motor does not rotate.	Power cord	Break of power cord (at blade tip or root of plug)	Replace the power cord.
	Fuse	Fuse cut-out	Replace the fuse. (Detail 1)
	Terminal in body	Deflection or break in connections	Repair. (Detail 2)
	Cord reel	Deflection of terminal or break in connections	Repair. (Detail 3)
	Motor	Abrasion of carbon brushes	Replace the carbon brushes. (Detail 4)
		Break in motor winding	Replace the motor.
	Hose switch	Deflection of terminal	Repair.
	Connections	Break	Repair. (solder or use connectors)
PCB assembly	Defective TRIAC	Replace the PCB assembly.	
Motor does not stop even if the switch is set "OFF".	Hose switch	Deflection of terminal	Repair.
	PCB assembly	Defective TRIAC	Replace the PCB assembly.
Suction power is low.	Paper bag	Full bag with dust	Replace the paper bag. (CP-11)
	Hose, brush, and pipe	Blocked or break	Remove the obstacle or replace.
	Filter	Clogged	Clean the filter.
	Motor	Defective Motor	Replace the motor.
Dust is excessively discharged from exhaust grill during operation.	Paper bag and filter	Damaged or torn	Replace the paper bag or the filter.
Cord can not be wound up.	Cord reel	Break of the spring for winding cord.	Replace the bobbin assembly.
	Power cord Reserved winding	Entanglement of cord Insufficient reserved winding	Draw out the cord 40-50 Cm and wind up again. Add proper reserved winding. (6 turns)
Cord does not stop at arbitrary position.	Tire Bobbin	Abrasion of the tire Sticking dust on the surface of the bobbin	Replace the tire. Clean.

4. COUNTERMEASURE DETAIL

COUNTERMEASURE	COUNTERMEASURE PROCEDURE
<p>1. Replacing a fuse</p>	 <ol style="list-style-type: none"> 1. Remove 3 screws (41) of the bottom of the body (1), so the cover assembly can be separated from the body. 2. Take out the fuse assembly from the body. 3. Rotate B part with pushing in the directions as shown the above figure. 4. Separate B part from A part, and then replace the fuse (250V, 6A) 5. When assembling, rotate B part in the opposite direction of separating after inserting the projection of the B part into the groove of the A part. <p>*CAUTION Take care not to damage the internal wires on assembling.</p>

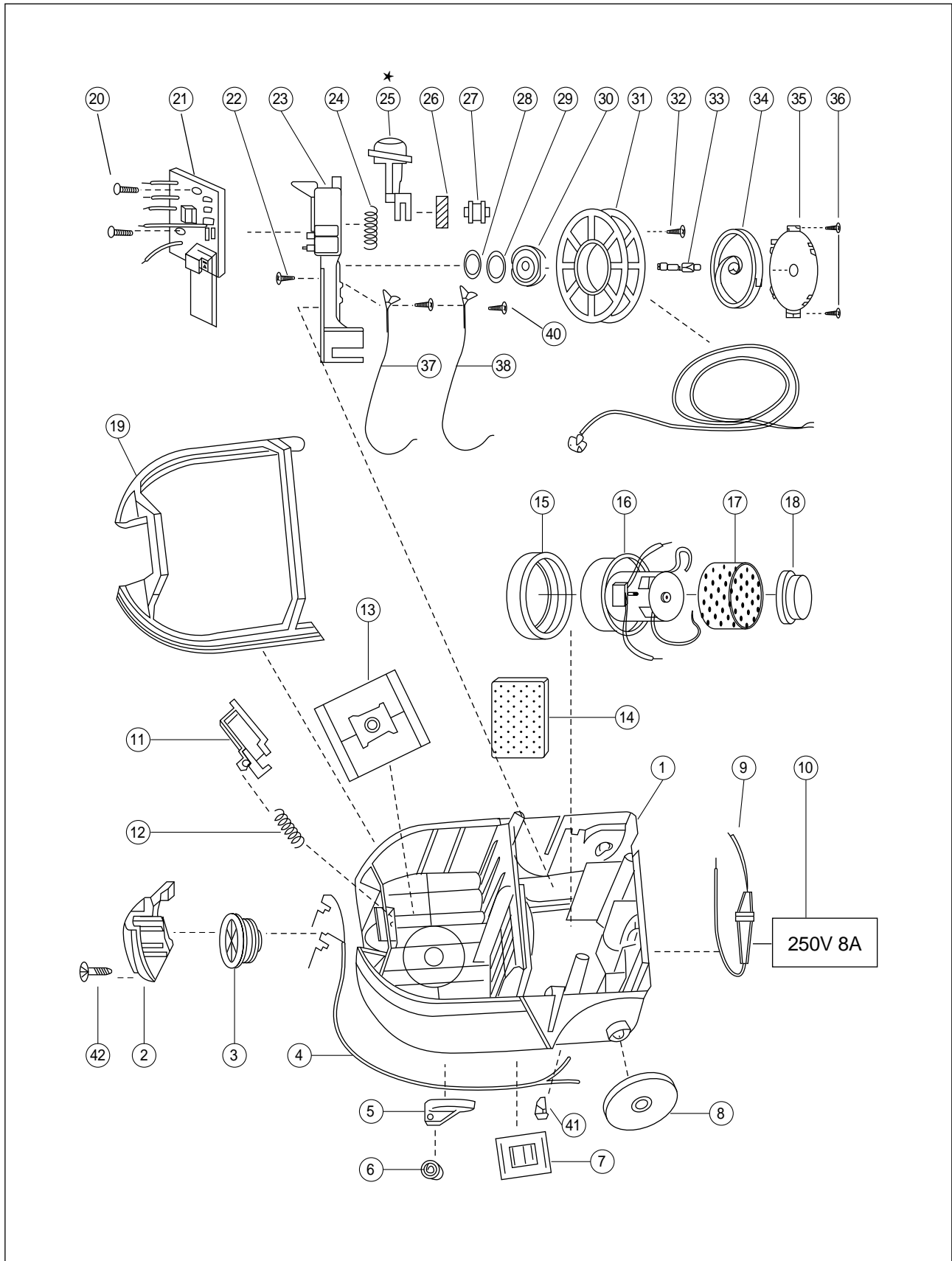
COUNTERMEASURE	COUNTERMEASURE PROCEDURE
<p>2. Repairing the terminal in the body</p>	 <ol style="list-style-type: none"> 1. After removing the screw (4), pull out the frame in the directions as shown the above figure from the body. 2. Check the terminals (3). <ul style="list-style-type: none"> -They are bent or deflected other than standard shape. ⇨ Repair the terminals as shown the standard shape in the above figure. -Break of a wire. ⇨ Soldering. 3. When assembling, first of all, fix the terminals into the grooves of the body, and then push the frame top down, so the upper part of the frame can be hung on the frame supporter of the body.

COUNTERMEASURE	COUNTERMEASURE PROCEDURE
<p>3. Repairing the cord reel assembly</p>	 <ol style="list-style-type: none"> 1. Separate the cover assembly, and then take out the cord reel assembly from the body. 2. After removing the screws (1), separate the PCB assembly. 3. Rotate the bobbin 6 turns in the opposite direction indicated by the arrow mark on the cover (12). 4. After removing the screw (3), separate the bobbin from the bracket (4). 5. Check the state of the contacts between the terminals (5, 6, 17). -Deflection or break of the terminals (5, 6). ⇔Repairing or replacing them. 6. When assembling, after putting the bobbin and the bracket together with the screw (3), make a reserved wind of 6 turns. <p>*CAUTION Take care not to separate the spring (13) from the cover (12). It is very dangerous.</p>

COUNTERMEASURE	COUNTERMEASURE PROCEDURE
<p>4. Replacing carbon brushes</p>	 <p>The diagram illustrates the components and steps for replacing carbon brushes. On the left, a motor assembly is shown with a dashed circle labeled 'A' around the brush holder area. On the right, a detailed view of the brush holder is shown, with a brush cap and a carbon brush assembly. The carbon brush is shown with a length of 32mm and a width of 5mm. A spring is also shown attached to the brush cap.</p> <ol style="list-style-type: none"> 1. Separate the cover assembly, and then take out the motor from the body. 2. Check whether the brush cap is separated from the brush holder. <ul style="list-style-type: none"> -Separation of the brush cap. ⇨ Fix it. 3. Check whether the carbon brush is worn out. <ul style="list-style-type: none"> - In case that the length of the carbon brush is less than 5 mm. ⇨ Replace the carbon brush assembly in pair.

5. EXPLODED VIEW AND PARTS LIST

1) BODY ASSEMBLY (3620400800)

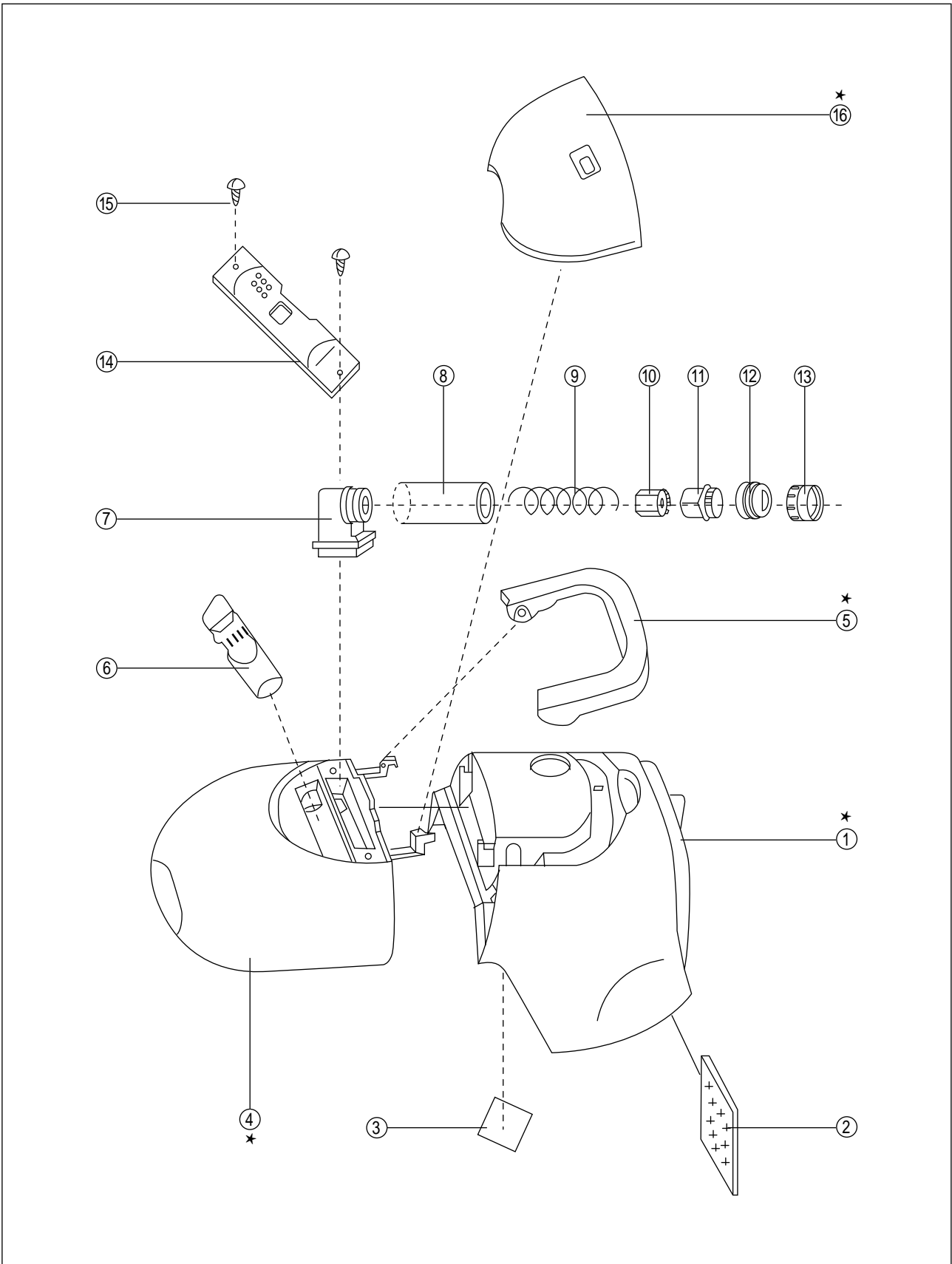


PARTS LIST OF BODY ASSEMBLY

NO.	PART NAME	PART CODE	Q'TY	DESCRIPTION
1	BODY	4560F20010	1	ABS
2	SOCKET	4560F20030	1	ABS
3	PACKING SOCKET	4560F20040	1	NATURAL RUBBER
4	TERMINAL	4565A37002	2	C5210P-EH
5	BRACKET ROLLER	4569C20041	1	PP
6	CASTER ROLLER	4568A54020	1	PP
7	LABEL	4560F10010	1	STICKER
8	ROLLER	4560F20020	2	PP
9	FUSE ASSEMBLY	4560A39002	1	250V, 8A
10	LABEL FUSE	4568F39010	1	STICKER
11	HOLDER FILTER	4560F25010	1	ABS
12	SPRING	4560F25080	1	HSW3
13	BAG FILTER	4560A57001	1	2-LAYER
14	FILTER	4560F24020	1	NON WOVEN FABRIC MAT
15	CAP MOTOR *F	4560M20101	1	NR
16	MOTOR UNIVERSAL	3962230200	1	220V, 1000W, O/S H
17	ABSORBER MOTOR	4569C10071	1	PU FORM
18	CAP MOTOR *L	3620900600	1	NR
19	GASKET COVER	4560F20060	1	PVC-S
20	SCREW TAPPING	7121400811	2	T2S PAN 4X8 MFZN
21	POWER CONTROL PCBAS	3624301101	1	RC-205 220V/60HZ
22	SCREW TAPPING	7121401211	1	T2S PAN 4X12 MFZN
23	BRACKET CR	4560F35010	1	ABS
24	SPRING	4560F35030	1	HSW3
* 25	BUTTON CR	3626601500	1	ABS(RC-209)
26	STOPPER CR	4569C35081	1	NBR
27	FRAME STOPPER	4565A35070	1	POLY ACETAL
28	TERMINAL	4565A36024	1	C2600P-1/2H
29	TERMINAL	4565A36034	1	C2600P-1/2H
30	HOLDER TERMINAL	4565A36010	1	ABS
31	BOBBIN	4565C35010	1	ABS
32	SCREW TAPPING	7121401211	1	T2S PAN 4X12 MFZN
33	SHAFT CR	4569C35051	1	PC LEAXAN 500
34	SPRING AS	3625102000	1	SUS301-EH-COVER,35
35	COVER	4565A35041	1	SPG
36	SCREW	7121300811	2	T2S PAN 3X8
37	TERMINAL AS	4560F42000	1	Y TERMINAL&LEAD
38	TERMINAL AS	4560F42000	1	Y TERMINAL&LEAD
39	CORD POWER	4560A38010	1	250V,7A
40	SCREW	7121400811	2	T2S PAN 4X8
41	SCREW	7121401411	3	T2S PAN 4X14
42	SCREW	7121301011	1	T2S PAN 3X10

* REPLACEMENT PART LIST (Applied model: RC-209)
 -BUTTON CR (4560F35020) → BUTTON CR (3626601500)

2) COVER ASSEMBLY



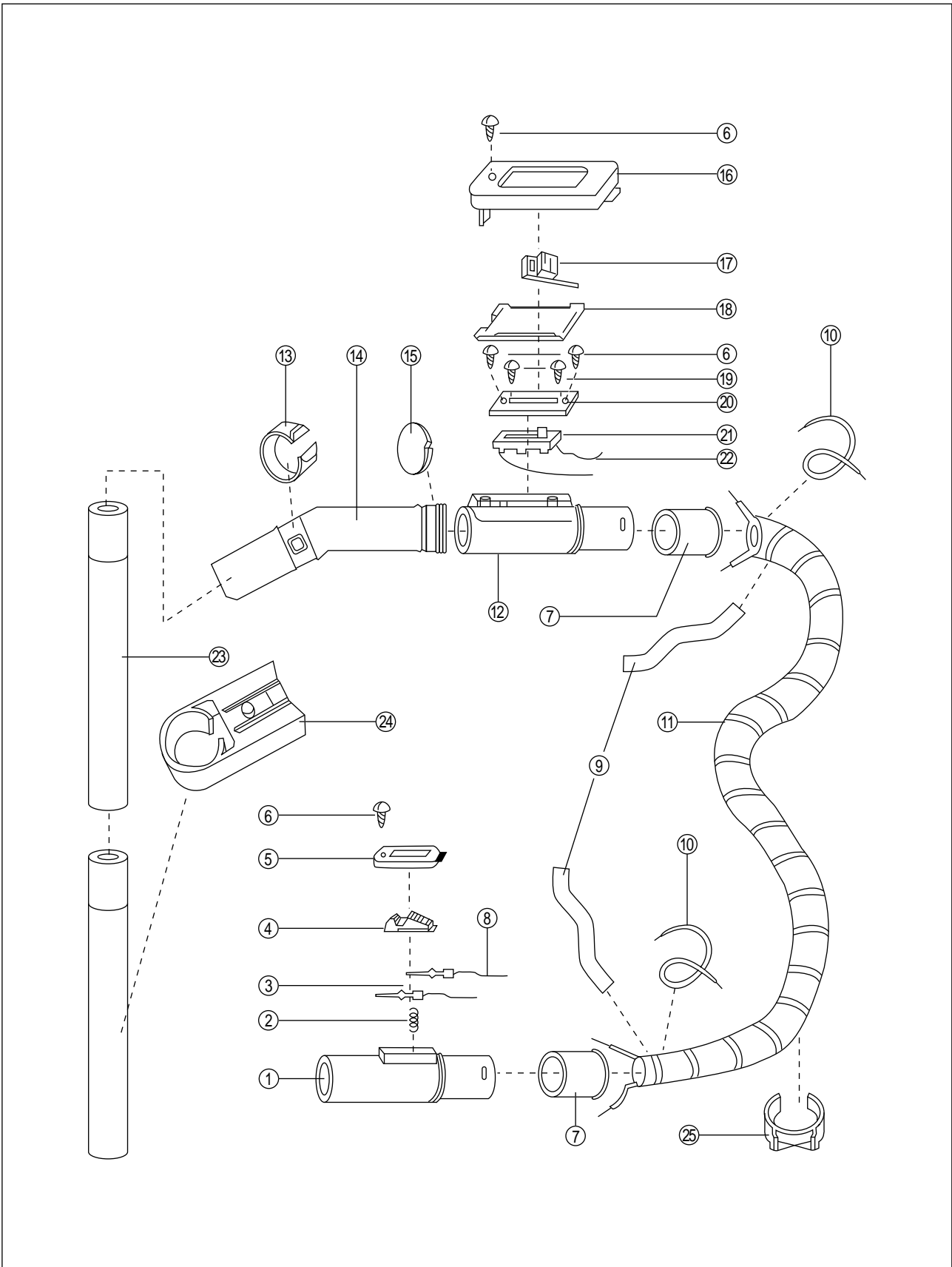
PARTS LIST OF COVER ASSEMBLY

NO.	PART NAME	PART CODE	Q'TY	DESCRIPTION
* 1	COVER BODY	3621406600	1	ABS (RC-209)
2	FILTER	4560F24020	1	NON-WOVEN FABRIC MAT
3	PACKING	4560F24030	1	POLYETHYLENE FOAM
* 4	COVER DUST	3621406700	1	ABS (RC-209)
* 5	HANDLE BODY	3622600300	1	ABS (RC-209)
6	BRUSH MULTI AS	4560A67000	1	ASSY
7	ELBOW DM	4560F23050	1	PVC-S
8	HOUSING DM	4560F23010	1	SAN
9	SPRING	3625100700	1	SUS
10	DUST METER	4560F23030	1	ABS GREEN
11	DUST METER	4560F23060	1	ABS RED
12	PACKING DM	3624000400	1	S-PVC
13	VALVE DM	3625400100	1	LDPE
14	SCREW TAPPING	7121300811	2	T2S PAN 3X8 MFZN
15	SCREW TAPPING	7121300811	2	T2S APN 3X8 MFZN
* 16	COVER NOZZLE	3621406500	1	ABS (RC-209)

* REPLACEMENT PART LIST (Applied model: RC-209)

- COVER BODY (4560F24010) → COVER BODY (3621406600)
- COVER DUST (4560F52010) → COVER DUST (3621406700)
- HANDLE BODY (4560F52010) → HANDLE BODY (3622600300)
- COVER NOZZLE (4560F52020) → COVER NOZZLE (3621406500)

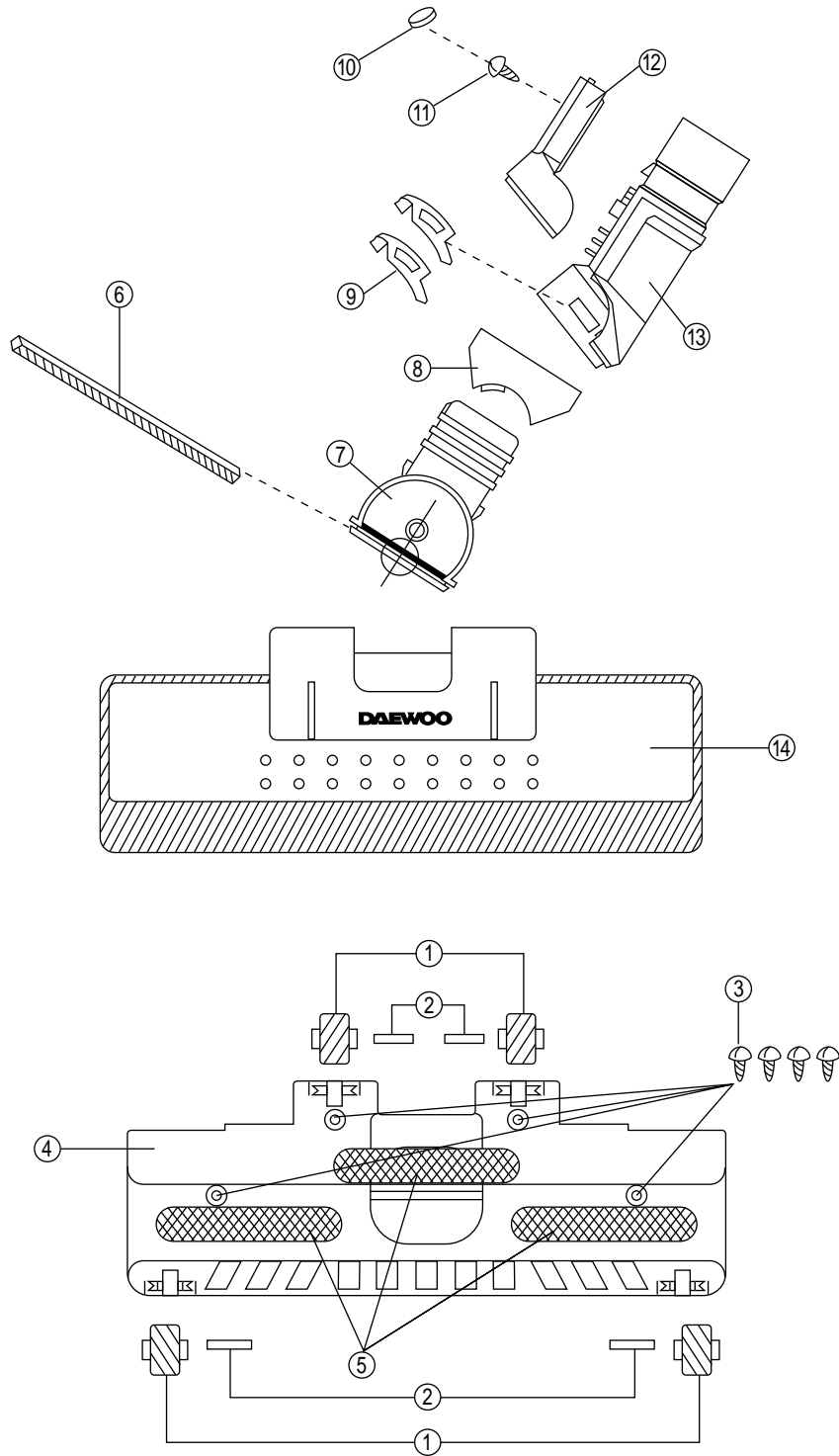
3) HOSE LINE ASSEMBLY



PARTS LIST OF HOSE LINE ASSEMBLY

NO.	PART NAME	PART CODE	Q'TY	DESCRIPTION
1	ADAPTER HOSE	4565A70010	1	ABS
2	SPRING	4565A70050	1	SWPB D0.5
3	PIN TERMINAL	4568A70020	2	C2800W-H
4	BUTTON ADAPTER	4565A70061	1	ABS
5	HOLDER BUTTON	4565A70070	1	ABS-380/750
6	SCREW TAPPING	7121300812	4	T2S PAN 3X8 MFZN
7	COVER HOSE	4565A70040	2	PP
8	WIRE CONNECTION	4565A70030	0.15M	STEEL WIRE 0.7D
9	TAPE VINYL	2TU00019BK	0.30M	19mm BLACK
10	WIRE BIND	8860108WH	0.70M	AWG 21
11	HOSE	4565A71001	1	PVC-S/SWRS 1.32M
12	FRAME	4565A70080	1	ABS
13	RING	4560F70150	1	PP
14	PIPE	4560F70130	1	PP
15	RING	4560F70120	1	ABS
16	COVER PIPE	3621401300	1	ABS
17	KNOB	3623400100	1	PC
18	PLATE	3624500200	1	ABS
19	SCREW MACHINE	7001200310	2	PAN M 2X3
20	PLATE VOLUME	4569G25050	1	SPG
21	VR SLIDE	5V2504007B	1	CSSPN-3006-1B500K
22	WIRE LEAD	8YS12018YW	0.15M	VSF 12/0.18
23	PIPE	4560F75030	2	PP
24	HOLDER PIPE	4560F76000	1	ACETAL
25	HOOK HOSE	4560F77000	1	PP

4) BRUSH ASSEMBLY



PARTS LIST OF BRUSH ASSEMBLY

NO.	PART NAME	PART CODE	Q'TY	DESCRIPTION
1	ROLLER BRUSH	4560F90020	4	PP & PVC
2	PIN ROLLER	4560F90120	4	SWRM MFZN
3	SCREW TAPPING	7121401411	4	T2S PAN 4X14
4	BODY BRUSH	4560F90010	1	ABS
5	HOLDER BRUSH ASS'Y	4568B91001	3	ABS & NYLON
6	PACKING	3624000500	1	NBR FOAM
7	NECK	4560F90070	1	ABS
8	COVER PIPE	3621401000	1	ABS
9	HOOK	3623100100	2	POM
10	COVER SCREW	4560A65080	1	FILM, T=0.5
11	SCREW TAPPING	7121300812	1	T2S PAN 3X8
12	COVER PIPE	3621400800	1	ABS
13	PIPE	3624401700	1	ABS
14	COVER BRUSH	4560F90080	1	ABS

DAEWOO

DAEWOO ELECTRONICS CO., LTD.

686, AHYEON-DONG MAPO-GU SEOUL, KOREA

C.P.O. BOX 8003 SEOUL, KOREA

TELEX: DWELEC K28177-8

CABLE: "DAEWOOELEC"

FAX: 02) 360-8184

TEL: 02) 360-8179-8180

<http://G7F00E@web.dwe.co.kr>

PRINTED DATE: JAN.1999

S/M NO.:C2050KVEF1

Service Manual

Vacuum Cleaner

Model: RC-205



DAEWOO ELECTRONICS CO., LTD.

